



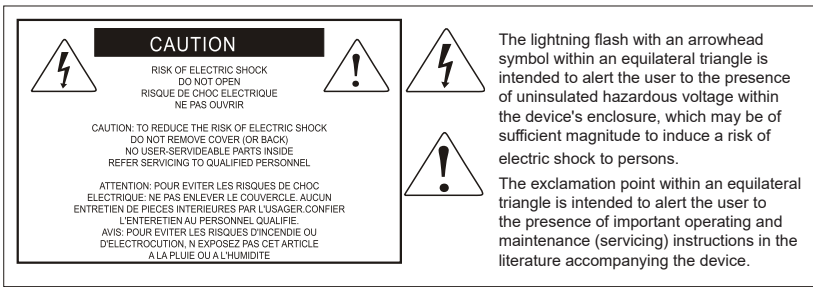
# P1-M

Professional USB-MIDI Control Surface

**The future of DAW controllers has arrived.  
Welcome to the revolution!**

Presenting the shining star in the field of mid-sized MIDI DAW control surfaces – the P1-M, featuring a 16-panel, programmable digital touch screen, multiple simultaneous DAW control, clear and bright LED channel meters, highly advanced software, easy plug-in control and intuitive, intelligent design. Extendable, reliable and adaptable and now taking center-stage; the P1-M!





## ***Important Safety Instructions***

1. Read this manual thoroughly before using this unit.
2. Keep this manual for future reference.
3. Take notice of and comply with all warnings included in the user's manual or indicated on the appliance.
4. Follow all instructions included in this manual.
5. Do not expose this unit to rain or moisture. Avoid having water or other liquids spilled on this unit.
6. When cleaning the cabinet or other parts of this appliance, use only a dry or slightly damp soft cloth.
7. Do not block any ventilation openings or interfere with the proper ventilation of this unit. Install in accordance with the manufacturer's instructions.
8. Do not use or store near any heat sources such as radiators, heat registers, stoves, or other heat-producing appliances.
9. Do not interfere with plugs in any way. Do not open the unit. ALWAYS consult an electrician for any proposed electrical work and NEVER attempt any remedial work yourself.
10. Protect the power cord from being walked on or otherwise damaged by items placed on or against them. Particular attention should be given to the plugs, receptacles, and the point where the cord exits the appliance.
11. To avoid the risk of electrical shock, do not touch any exposed wiring while the unit is in operation.
12. Only use attachments/accessories specified by the manufacturer.
13. Unplug this unit and all connected electrical equipment during lightning storms or when left unused for a long period of time.
14. Refer all servicing to qualified service personnel. Servicing is required when the appliance has been damaged in any way or fails to operate normally.

**WARNING: To reduce the risk of fire or electric shock, do not expose this unit to rain or moisture**

# Contents

Introduction.....	4
What's in the package? .....	4
Register your ICON Pro Audio product to your personal account .	5
Features Pt.1.....	6
Features Pt.2.....	7
Top Panel Layout.....	9
Rear Panel Layout .....	14
Getting Started with the P1-M .....	15
How to Allocate DAWs to the DAW buttons in the iMAP .....	16
Launching the P1-M in Every Day Use.....	20
Ableton Live .....	21
Audition.....	22
Bitwig.....	23
Cakewalk .....	24
Cubase/Nuendo .....	26
Digital Performer 11.....	27
FL Studio .....	28
Logic Pro .....	29
Luna.....	30
Mixbus 32C .....	31
Pro Tools.....	32
Reaper.....	33
Reason .....	34
Samplitude .....	35
Studio One.....	36
Tracktion Waveform.....	37
Installing iMap™ for the Mac .....	38
Installing iMap™ for Windows.....	41
The iMAP™ .....	43
Other Functions in iMap™ .....	52
Firmware upgrade .....	53
Hardware Connections.....	56
Expanding your system .....	58
Specifications .....	60
Services.....	61

# Introduction

Firstly, congratulations on your purchase of the ICON Pro Audio P1-M MIDI DAW controller! In these pages, you'll find a detailed description of the features of the P1-M and a full list of specifications.

Please register the product on our website at the link below

[www.iconproaudio.com/registration](http://www.iconproaudio.com/registration)

As with most electronic devices, we strongly recommend you retain the original packaging. In the unlikely event that the product is returned for servicing, the original packaging (or reasonable equivalent) is required. With proper care and adequate air circulation, your P1-M MIDI DAW controller will operate flawlessly for many years to come.

We trust that this product will provide years of excellent service and in the unlikely event that your product does not perform to the highest standard, every effort will be made to address the issue.

## What's in the package?

- P1-M USB C - MIDI Controller x 1pc
- Quick Start Guide x 1
- USB C Cable x 1
- AC adaptor x 1



# ***Register your ICON Pro Audio product to your personal account***

## **1. Check the serial number of your device**

Please go to <http://iconproaudio.com/registration> or scan the QR code below.

Input your device's serial number and the other information on the screen. Click "Submit".



A message will pop up showing your device information such as model name and its serial number - Click "Register this device to my account". If you see any other message, please contact our after-sales service team

## **2. Log in to your personal account page for existing users or sign up as a new user**

Existing user: Please log into your personal user page by inputting your user name and password.

New user: Please click "Sign Up" and fill in all the information.

## **3. Download all useful materials**

All your registered devices under your account will show on the page. Each product will be listed along with all its available files such as drivers, firmware, user manuals in different languages and bundled software etc. for download.

# Features Pt. 1

Many of the top mixing engineers and producers in the world are switching to mid-sized DAW controllers from older, larger systems due to their convenience, size and increasing functionality and reliability. The P1-M is set to make a very large impact in this market, as it's never-before-seen level of functionality, combined with expandability and rock solid reliability courtesy of the super stable Cortex-M7 @500 MHz ARM chip, provides a fresh, new perspective on just what is achievable for a device of this size and price point. Existing mid-sized DAW controller owners will also be drawn to the rich array of features available - which some would describe as revolutionary! Because.....they are!

With ground-breaking functionality at your fingertips via a programmable 16 panel electronic touchscreen, which features all the DAW functions you would ever need in a recording, mixing or mastering session, the P1-M will soon become the beating heart of any studio facility.

A total of 80 DAW functions can be assigned to this attractive and color-coded touchscreen display - via 5 color modes, (blue, green, orange, purple and red), which can in turn be adjusted (i.e. for EQ or a plug in) with the eight noiseless, smooth and refined rotary encoders, which also function as PAN knobs.

With the P1-M, you can now connect up to three DAWs at the same time! If your main project is in, say Pro Tools, but you need to quickly shoot back to Cubase - no problem! The P1-M will allow this to happen literally at the touch of a button without any delay or fuss, which means no interruption to you or your workflow.

By pressing 'Focus', you can now select a plug-in parameter\* with the mouse and adjust values with the smooth, gliding action of the jog wheel. This feature is likely to become a favorite of those who love hands-on, interactive control of their plug-ins and EQ (and who doesn't?!).

\*Every parameter may not be supported by every plug in

A new and highly advanced user-friendly generation of iMAP™ software supports the PM-1. This allows you to completely re-arrange how DAW functions appear in the 5 color modes of the 16 panel touchscreen (a total of 80 possible functions per DAW). Additionally, users can map MIDI functions and keyboard hotkeys within the software. All in real time!

Beautifully clear and bright on-board LED monitoring reflects accurate readings from the DAW. These are designed with ergonomics in mind, in the upper area of the device so that the meters are always visible.

With the optional D-4T display unit, the P1-M gives you complete control over your projects. Expandable with the optional P1-X extender and its own D-4 display unit, the world really is your oyster! This intelligent, intuitive and highly attractive unit will suit anyone's aesthetic and feature requirements. The professional feel, design and functionality of the P1-M will bring you closer to your music, improve your workflow and heighten your experience.

Welcome to the revolution!

## Features Pt.2

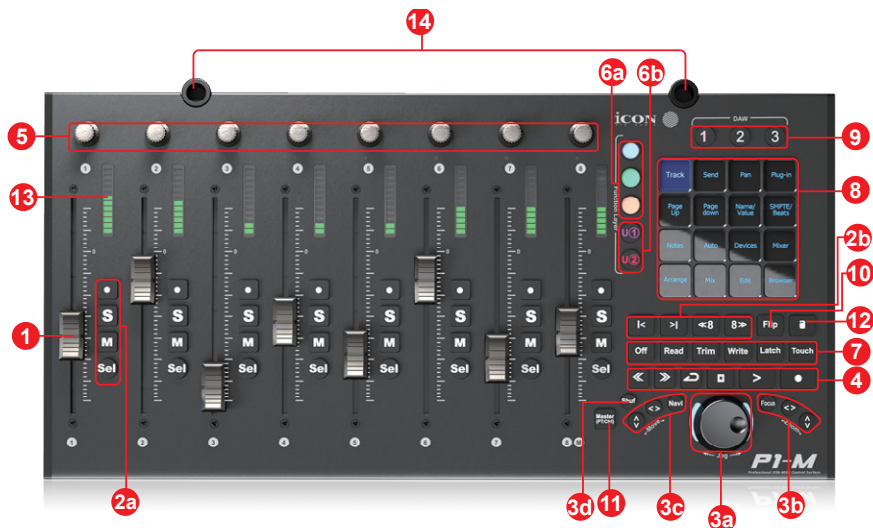


- 8x touch-sensitive motorized faders with 12-bit resolution
- Programmable 4 inch, 16 panel digital touch screen display showing DAW functions per 5 color modes - a potential total of 80 displayable and actionable functions per DAW
- Organize DAW functions in the 16 panel touchscreen easily via 'drag and drop' in the iMAP™ - changes made in real time
- Capability of connecting to 3 DAWs at one time via the DAW select buttons
- Extremely hardwearing, durable and versatile
- Precise, clear and attractive OLED meters
- Smooth-action jog wheel shuttle for fast search, scrub and control
- 8 smooth action dual-function encoder knobs (Rotate and Enter)
- Illuminated function buttons for 'Read', 'Write', 'Touch', 'Latch', 'Trim'; and 'Off' - activated/de-activated as required per DAW
- Illuminated buttons for channel control including Mute, Solo and Record
- 6 illuminated transport buttons including Play, Stop, Rec, Rewind, Fast Forward and Loop
- Dedicated 'Flip' and 'Master' buttons for fader flipping and access to the master channel (Channel 8 becomes the Master channel)
- Illuminated "Zoom" button with 2 directional keys (Left/Right & Up/Down), also used in combination with the jog wheel
- Illuminated 'Focus' button which allows the user to "focus" in and adjust plug-in, EQ parameters etc. via the smooth-action jog wheel
- 2 illuminated "Track" buttons for selecting individual channels
- 2 illuminated "Bank" buttons for shifting 8-channels at a time
- Supports Universal Mackie Control and HUI protocols for seamless integration with compatible music production software
- Supports Ability, Audition, Ableton Live, Bitwig, Cakewalk, Cubase/Nuendo, Digital Performer, FL Studio, Mixbus 32C, Pro Tools, Logic Pro, Luna, Reaper, Reason, Samplitude, Studio One and Tracktion Waveform

- iMap™ software included
- USB C high-speed connectivity
- Firmware upgrade available via USB C connection and iMap™ software
- User A & User B 1/4 inch inputs for connecting footswitch pedals
- **Class-compliant with MacOS 10.15 or above & Windows 10 or above**
- Superior build quality and robust metal casing with Kensington lock port
- Expandable with the D-4T display unit for complete control
- Expandable with the P1-X extender unit (8 channels per unit)
- Expandable with the D4 display unit for the P1-X



# Top Panel Layout



**NOTE: The P1-M is a universal DAW controller (i.e. not designed for one specific DAW).**

Functions will operate slightly differently between DAWs. Please refer to your DAW manual for each function.

## 1. Faders

The eight ergonomically designed, motorized faders are generally used for controlling the track volume of the DAW. Depending on your DAW, you may use the “Flip” button to swap the rotary encoders and the fader functions. This may be useful if making very intricate moves for PAN or plug-in parameter values commonly executed using the rotary encoders. The 12 bit resolution faders are capable of very detailed movement.

Any automation recorded in a project will be reflected by the fader positions. All faders are touch sensitive and allow the user to override automation the moment a fader is touched.

*Select the 'Master' button to assign channel 8 as the Master channel, (except with Pro Tools).*

## 2. Control buttons

### 2a) Recording channel control buttons section

**REC button** - Activate and deactivate the recording state of the associated channel. The switch will light red when the channel is armed.

**SOLO button** - Activate/deactivate the solo state of the associated channel. The switch will light green when the channel solo state is on and other channels will be muted.

**MUTE button** - Activate and deactivate the mute state of the associated channel. The switch will light blue when the channel is muted.

**Sel button**- Activate the selected track.

## 2b) Motorized fader control buttons section

**Fader left button** - Shift “one” channel down for all faders

**Fader right button** - Shift “one” channel up for all faders

**BANK left button** - Shift “one” channel up for all faders

**BANK right button** - Shift “one” channel up for all faders

## 3. Jog wheel section

**3a) Jog wheel** - the jog wheel is used for various purposes specific to the DAW application, including shuttle and scrubbing functions. Press to switch between two functions, specific to the DAW. Engineered without stepped increments for a smooth, noiseless and luxurious feel.

### 3b) Zoom/Focus control buttons section

**Zoom UP/DOWN button** - The Zoom UP/Down button is used to navigate up or down through the Graphical User Interface (GUI) of the DAW application. This can also be controlled using the jog wheel.

**Zoom LEFT/RIGHT button** - The LEFT/RIGHT button is used to navigate left or right through the Graphical User Interface (GUI) of the DAW application. This can also be controlled using the jog wheel.

**Focus** - Press 'focus' and hover over a plug-in parameter with your mouse and use the jog wheel as a device to change the parameters.

### 3c) Move and directional buttons

Press the "Navi" button and rotate the jog wheel to navigate through the channels.

Select directional buttons to determine the direction of travel for navigating up and down your tracks in your DAW's arrangement window and left and right across the tracks in the Mixer view using the jog wheel. You may also use these buttons in combination with the jog wheel to navigate elements of your DAW, for example audio segments in the arrangement window.

**3d) 'Shuffle button** - Press this button and rotate the jog wheel to navigate through the tracks in banks of 8 channels at a time. This will result in high speed navigation through the channels - especially helpful in projects with many tracks.

## 4. Transport control buttons section

**PLAY button** - Activate the play function of the DAW.

**STOP button** - Activate the stop function of the DAW.

**REC button** - Activate the record function of the DAW.

**REWIND button** - Activate the rewind function of the DAW.

**FAST FORWARD button** - Activate the fast forward function of the DAW.

**LOOP button** - Activate the loop function of the DAW.

## 5. Knobs

The eight smooth, noiseless, endless rotary encoder knobs are generally used for controlling the track pan position, aux send levels and EQ of your DAW. You may also use them to adjust specific parameters within plug-ins and virtual instruments, (as your DAW software allows). The push-button action of the knob can be used to change modes of operation within the DAW (this is DAW dependent) and the rotating action of the knob can be used to change parameters of PAN, EQ, plug-in values etc.

## 6. Color-coded function buttons (5 buttons)

**6a)** - This section of 3 control buttons are LED color-coded for different functions on each layer. Switch between the color modes (along with those in 6b) for different functions which appear in the 16 panel touch screen. The functions can be rearranged in the iMAP to your own configuration.

**6b)** - This section of 2 control buttons are LED color-coded for different functions on each layer. Switch between the color modes (along with those in 6a) for different functions which appear in the 16 panel touch screen. The functions can be rearranged in the iMAP to your own configuration.

Purple and Red modes double as 'User 1' and 'User 2' buttons, which can be used when assigning a footswitch, insertable at the rear of the device. You can assign whichever kind of control is allowable/suitable in your DAW, i.e. 'record' for hands free control in a recording session.

## 7. Dedicated function buttons

**Read** - Read function enabled/disabled

**Write** - Write function enabled/disabled

**Touch** - Touch function enabled/disabled

**Latch** - Latch function enabled/disabled

**Trim** - Trim function enabled/disabled

**Off** - Off function enabled/disabled

As the P1-M is a universal controller, these will illuminate or not depending on your DAW. For example, in Cubase, the latter four buttons will not illuminate, whereas in Bitwig, the latter two will not illuminate. This is part of the intelligent design of the P1-M.

## 8. 16 panel touchscreen display

The pièce de résistance of the P1-M. This 4 inch 16 panel touchscreen features

an illuminated display of DAW control functions for easy access by the user. The 16 panel display allows for functions to be displayed in five different color modes, (section 6). That means an amazing 80 functions can be easily accessed via the touchscreen. These can be left in their default state or loaded, arranged and rearranged by the user in the iMAP software so that you can have all the functions you need, at your fingertips, where you want them!

Alter the appropriate function parameters via the smooth action rotary controllers.

As an example, in Cubase, select Edit, to load the channel settings of the selected track, EQ to alter the channel EQ setting. Use PAGE UP and PAGE DOWN to navigate through the parameter pages and the rotary encoders to change the value of Gain, Frequency and Q.



## 9. DAW selector buttons

Select the DAW you would like to connect to, by selecting DAW buttons 1-3. The DAW must be set up and configured previously, (see Getting Started with the P1-M). You may change which DAWs you connect to in the iMAP, (see 'How to Allocate the DAWs to the DAW Buttons').

## 10. Flip

Use this button to 'flip' the functions of your fader and the first rotary controller. This is ideal when you need to make very intricate changes to PAN or plug-in parameter values using the fader, rather than the rotary encoder.

## 11. Master/Assign

Select this button to switch to using the channel 8 fader as a Master fader.

## 12. Lock

Pressing this button will ensure that the units faders do not change regardless of the movement of the physical fader. The user must press this button to 'unlock' the channel in order to affect a change.

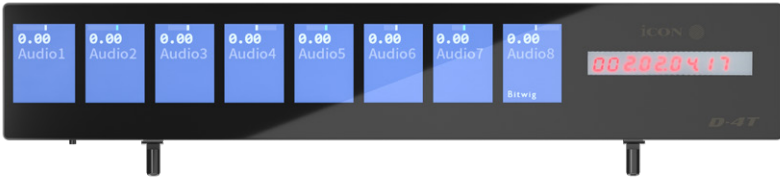
If using P1-X extenders, the Lock button will communicate in real time via the iMAP - which acts as a 'bridge' between the units - faders on the P1-X will be similarly affected.

## 13. Channel LED Meters

Eight 12-segment LED meters showing the associated channel level.

## 14. D4T sockets

These sockets are used to house the 'legs' of the D4T display unit. A D4T display unit will significantly enhance the experience of the user. Without a D4T unit, if the user wishes to affect a change in, say a plug in, they may observe parameter changes etc. in the DAW itself or on the smaller, on-board display, (information displayed is DAW-dependent).



# Rear Panel Layout

3

2

1

4

## 1. USB C port

Functions as a MIDI port to your computer and compatible software.

## 2. User A / User B ¼ inch inputs

These ¼ inch inputs are used to connect to foot pedals to activate selected functions in your DAW. To set their parameters, select USER A and USER B parameters in your DAW.

## 3. 12V/2.5A power adapter port

Connect the power adaptor provided, here.

(Note: the P1-M is not able to work without the provided power adaptor connected. USB bus power from a computer is insufficient).

## 4. D4T display unit connector

Connect your optional D5 display module to this connector with the provided cable. The D4T displays a range of DAW dependent information as well as digital metering. The D4T OLED makes adjusting parameters of plugs-ins and EQ easy, with less staring at your DAW and more interaction with your DAW controller!



# Getting Started with the P1-M



- 1. Connect the P1-M to your Mac/PC via the USB C port**  
Choose a USB port on your Mac/PC and insert the USB C cable. Connect the cable's other end to the P1-M. Switch on! Your Mac/PC should automatically “detect” the new hardware.
- 2. Set up the 3x DAWs you wish to connect to in the iMAP**
  - A) Set installing the 'iMAP' section.
  - B) Following the diagrams below. Let's use these examples as the DAWs we want to set up on the P1-M.

DAW #1	Bitwig
DAW #2	Cubase
DAW #3	Logic



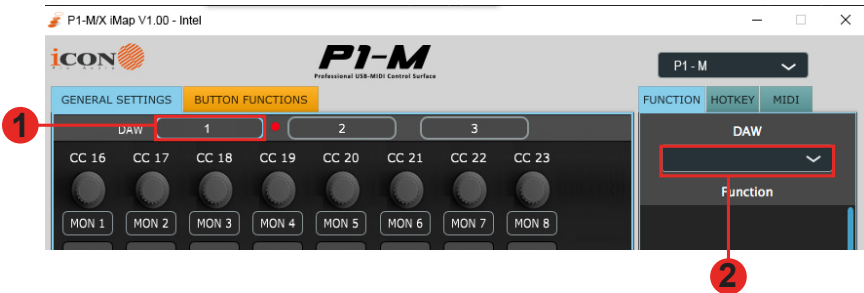
In order to allocate the right DAW to the right DAW button (above), we're going to need to use the iMAP.

First, make sure the iMAP is downloaded and installed, (p46/47) then read the following section.

# How to Allocate DAWs to the DAW buttons in the iMAP

This is covered in more detail in the iMAP section of this manual, but here's a general introduction.

Just so we understand the general principle, we are going to allocate button 1, 2 and 3 on the P1-M, to Bitwig, Cubase and Logic Pro respectively.



So, you've downloaded, installed and opened the iMAP. You will see the three DAW buttons on top of the iMAP. These correspond to the three DAW buttons on the P1-M.

Simply select the corresponding button of choice and select a DAW from the drop down list.

The DAW will be automatically allocated. There is no need to send data, or perform any special function.

You may do this for all three buttons on the iMAP/P1-M.

Please go to the iMAP section for further details on this and how to use the iMAP, including how to allocate commands and functions to the 16 panel touchscreen, MIDI map commands and even allocate QWERTY hot keys to your P1-M.

Remember that, in everyday use, YOU MUST ENSURE YOU LAUNCH THE IMAP FIRST, then the P1-M, before launching the DAWs you wish to work with;

## Remember:

**Step 1:** Switch on the iMap

**Step 2:** Switch on the controller

**Step 3:** Launch the DAW/s you intend to use

Or simply remember the letters ICD;

## iMAP Controller DAW/s

(You may wish to associate a phrase that will make this easy to remember i.e. "I Can Do



## Setting up the P1-M in the DAWs

Now we have allocated our 3 DAWs within the iMAP, we will need to configure our DAWs so that the P1-M recognizes them and the DAW/s recognize the P1-M.

This is how it works;



*Note: MIDI port 4 is used by the iCON Pro Audio software, iMAP<sup>(TM)</sup>, to change the three DAWs you use, to update firmware and to program the 16 panel touchscreen with the functions of your choice.*

These four options will appear as a menu from which you can select your chosen DAW.

So, remembering our examples of;

<b>DAW #1</b>	<b>Bitwig</b>
<b>DAW #2</b>	<b>Cubase</b>
<b>DAW #3</b>	<b>Logic</b>

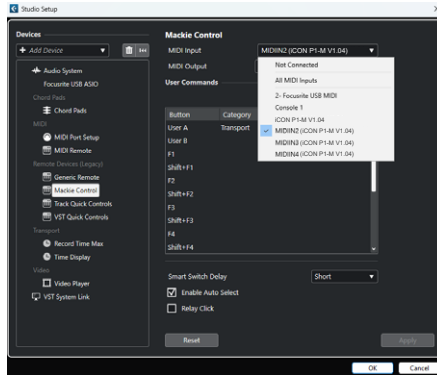
We know that we need to select 'P1-M v1.04' (or whichever firmware version it is\*), in Bitwig because that is the DAW we have chosen to be DAW #1. When you press DAW #1 on the unit, the P1-M will automatically go into Bitwig mode.

In our example, Cubase is our second DAW, so when we are configuring our DAW to work with the P1-M, we will need to select 'MIDIIN2 (P1-M V1.04)' (or whichever firmware version it is\*) in the menu. When the P1-M is set up as a Mackie control device in Cubase, whenever we press '2' in the DAW Controller selection section, the P1-M will automatically select Cubase.

The same applies for Logic, although this time we are going to select 'MIDIIN3 (P1-M V1.04)' (or whichever firmware version it is\*) and use button '3' in the DAW controller selection area to automatically select this DAW.

*\*firmware versions are updated over time*

Here's an example of how it is set up in Cubase.



As you can see, when configuring the device as a Mackie controller, there is a choice of 4 possible options. Because we have set up Cubase to respond to DAW control button '2' on the P1-M, we are going to select 'MIDIIN2 ( P1-M V1.04)'. Please note that there is only one instance of Mackie Control, which is usually recommended for single controller devices.

Please also note, (although this is specific to Cubase), that users should use Mackie Control in the usual way to set up their devices in Cubase 12 onwards and not Cubase's MIDI Remote Manager. Regardless of the supported DAWs you are using, the principle will be largely the same.

Now, we've covered how we allocate DAWs to the P1-M DAW button of your choice (1-3) in the iMAP and, in principle, how to configure the DAW to the corresponding MIDI port, (as depicted above), let's move on to configuring our DAW/s in the next section.

**Before we move on, let's remember;**

**Step 1: Open the iMAP**

**Step 2: Switch on the controller**

**Step 3: Launch the DAW/s you intend to use**

Note: Please wait a few moments between each step, to ensure each is fully loaded.

*The reason for the order of this process is because, as you can see from the diagram below, the iMAP must occupy MIDI port 4 in order to communicate effectively. Unfortunately, some DAWs will automatically try to occupy that port when launched and this will prevent the iMAP from functioning properly. The iMAP, therefore, needs to be turned on first to make sure it occupies that MIDI port*



## Practical uses for the DAW modes

Some users might want to use two instances of the same DAW for, say buttons DAW#1 and DAW#2. Why? Well, let's take Fernando. Fernando is a young, up and coming producer and musician and he likes to master his own material too.

On a day-to-day basis, Fernando uses Cubase as his 'go to' DAW to record. He has set up his template which he loads into Cubase and he has also set up the touchscreen on his P1-M to load all of his favorite Cubase commands when pressing DAW button #1, when recording and mixing.

When mastering, however, Fernando imports his final mix stereo files into his mastering template in Cubase. Because this is a different task altogether, which requires a different approach, he has organized different commands for mastering purposes in Cubase which load when pressing DAW button #2.

Fernando is very organized. He will go far.

This is just one example of why you may wish to load the same DAW twice or even three times on the P1-M.

# Launching the P1-M in Every Day Use

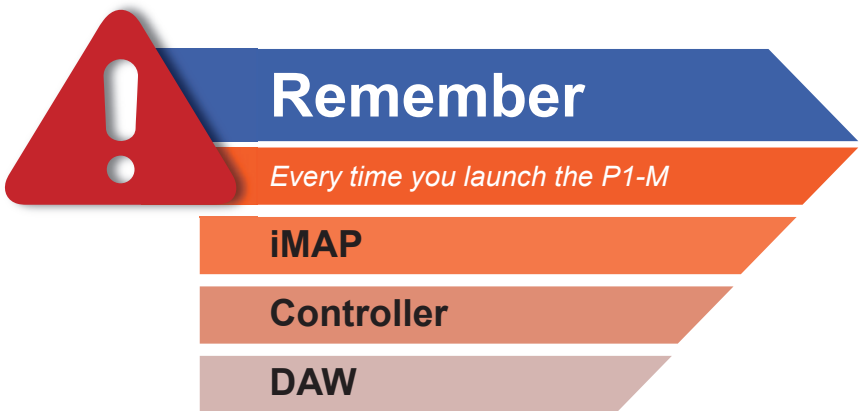
Every time you launch the P1-M, you should launch the iMAP first, the P1-M second and the DAW/s last.

This will allow the iMAP to communicate to the hardware directly. The iMAP communicates directly to the hardware only and does not communicate to other software - this ensures that the speed of communication is fast and unhampered by secondary factors.

Additionally, the iMAP acts as a kind of 'bridge' between the P1-M main unit and any P1-X extenders you may be using and ensures cohesion. The 'Lock' function, when used in conjunction with a P1-X extender unit for example, will work as expected. If the iMAP is not connected, it won't.

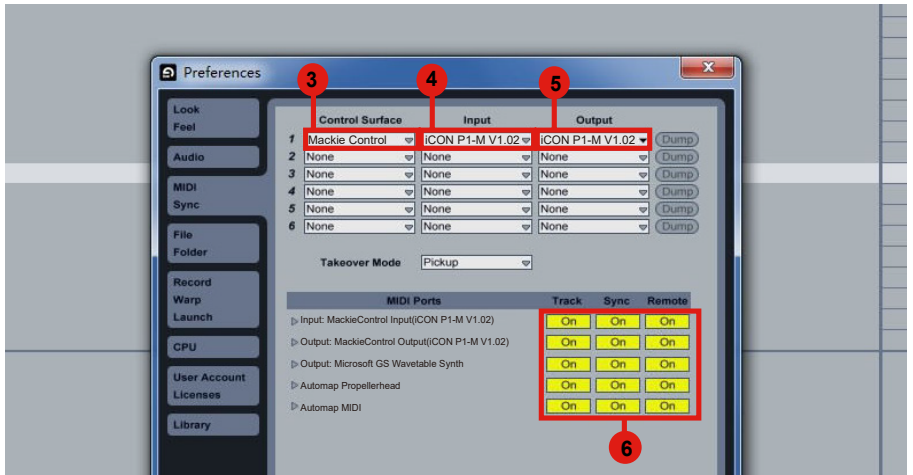
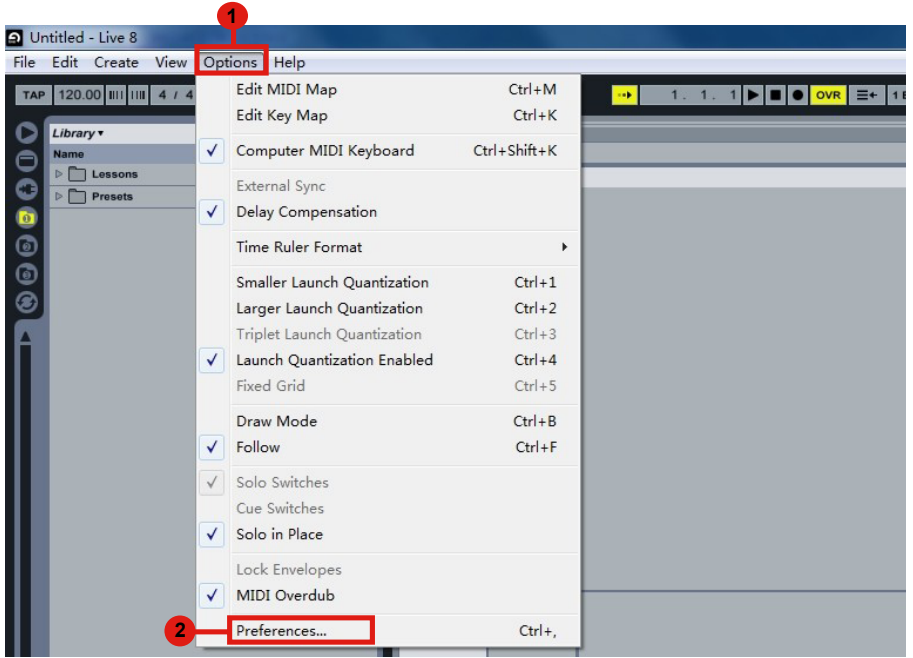
Of course, if you are expecting to make any changes with the programming of functions, the iMAP will need to run concurrently with the P1-M hardware.

Lastly, the reason for using the sequence of **iMAP**, **Controller**, **DAW** is because MIDI port 4 is used by the iCON Pro Audio software, iMAP<sup>(TM)</sup>, to change the three DAWs you use, to update firmware and to program the 16 panel touchscreen with the functions of your choice. You cannot use this port to connect your device. Unfortunately, some DAWs will automatically try to occupy Port 4 when launched and this will prevent the iMAP from functioning properly. The iMAP, therefore, needs to be turned on first to make sure it occupies that MIDI port.

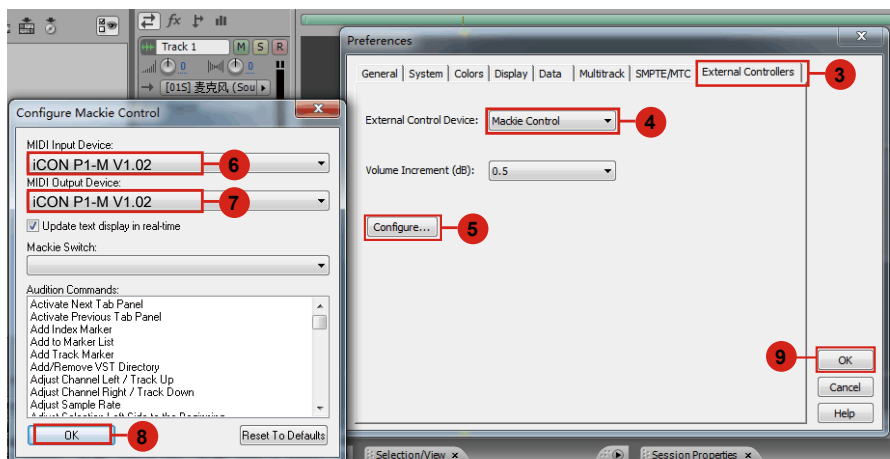
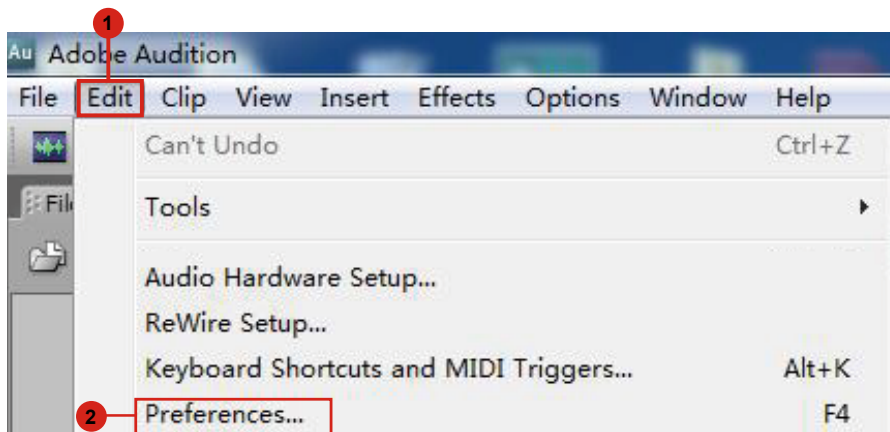


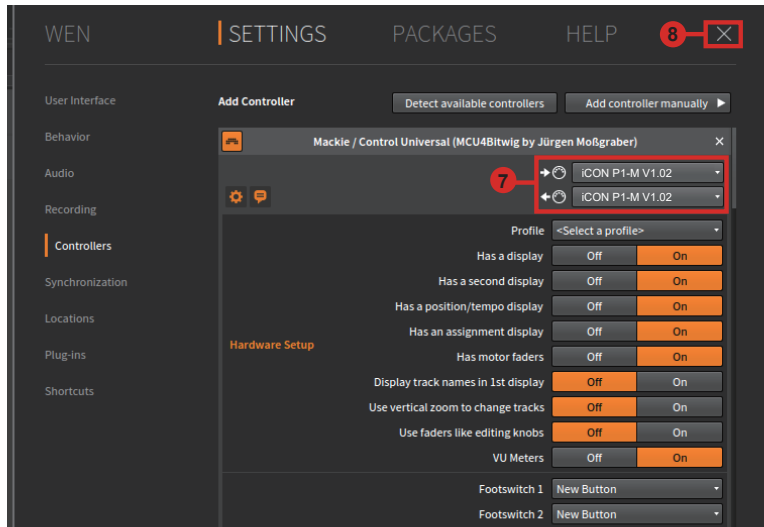
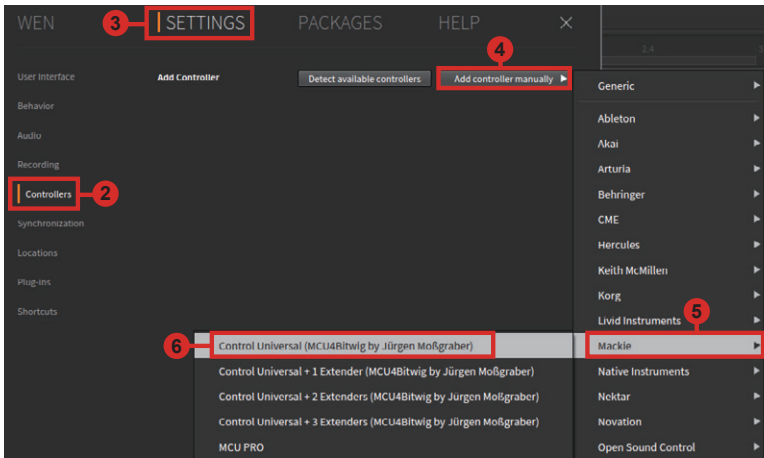
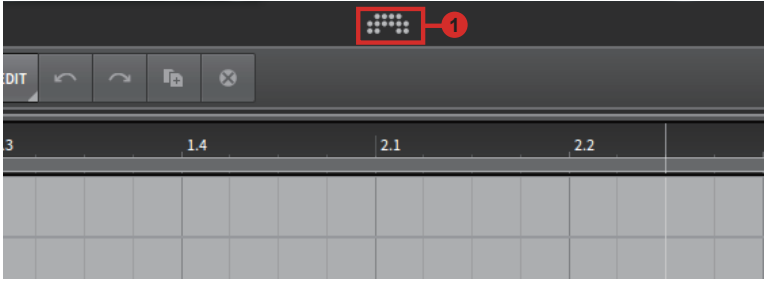
**Please note:** For the benefit of the following examples, we are going to assume the DAW you are connecting is DAW#1.

# Ableton Live

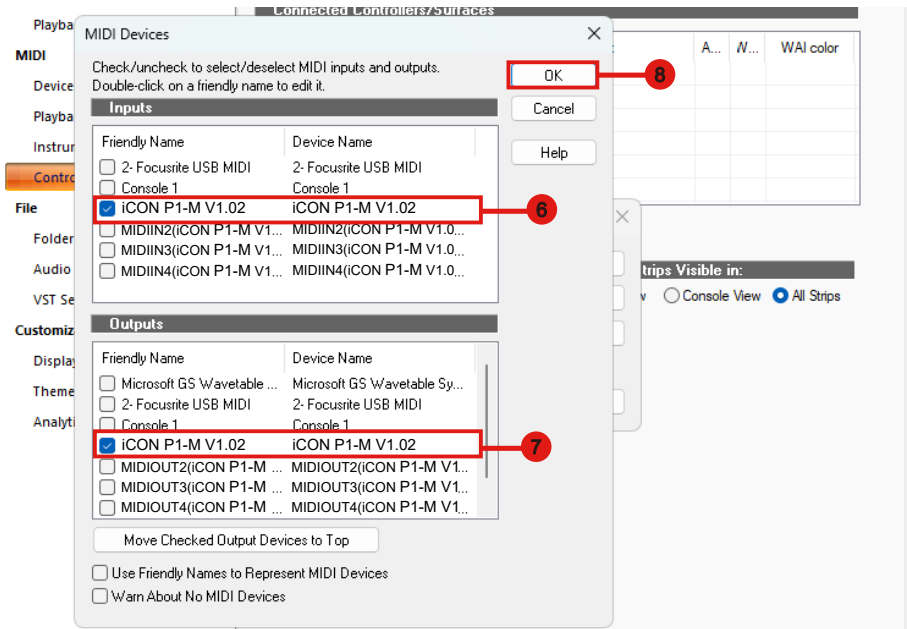
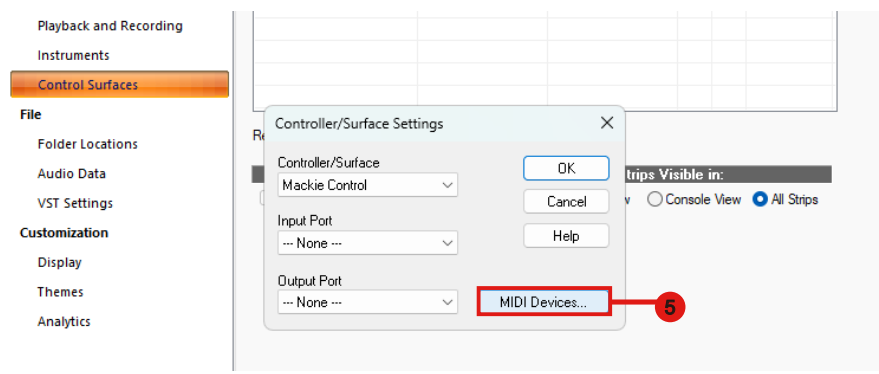
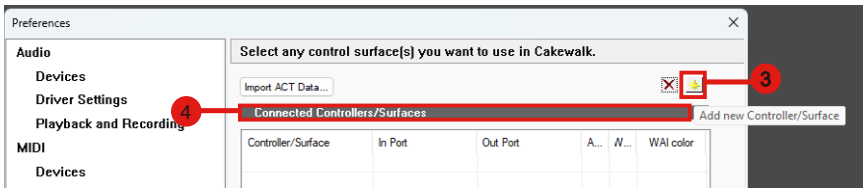
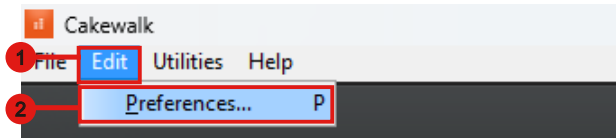


## Audition

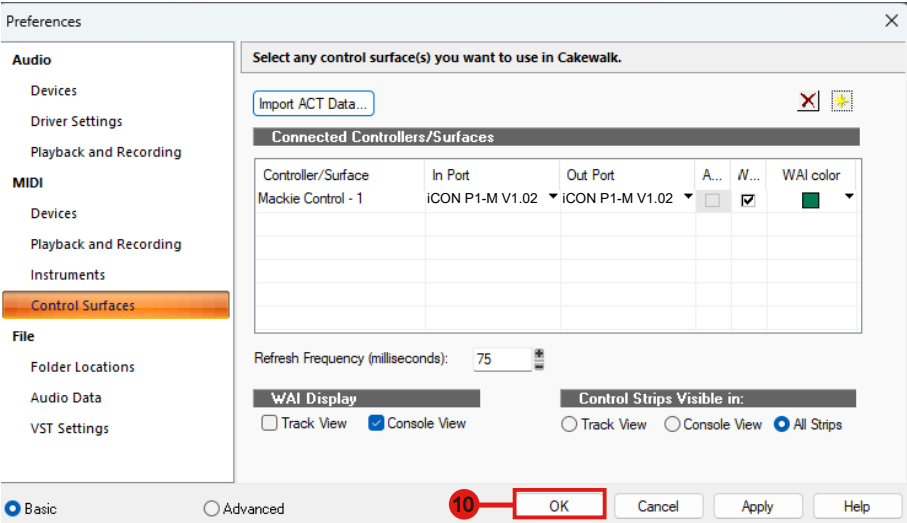
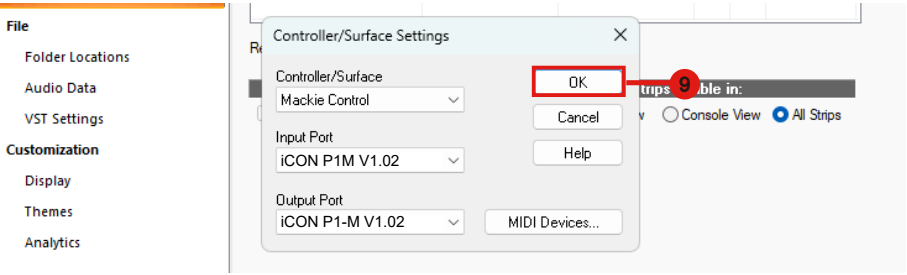




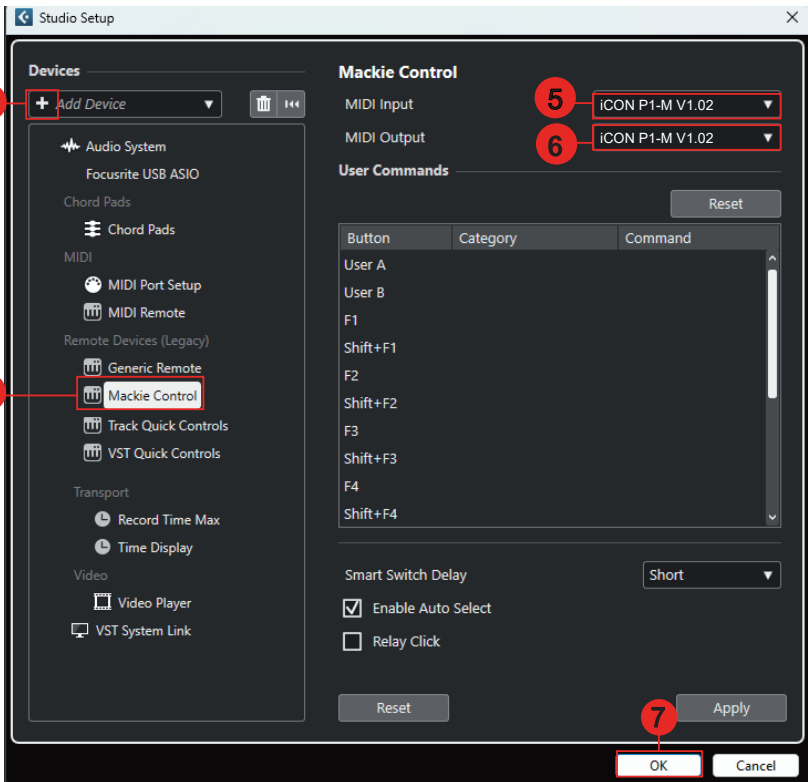
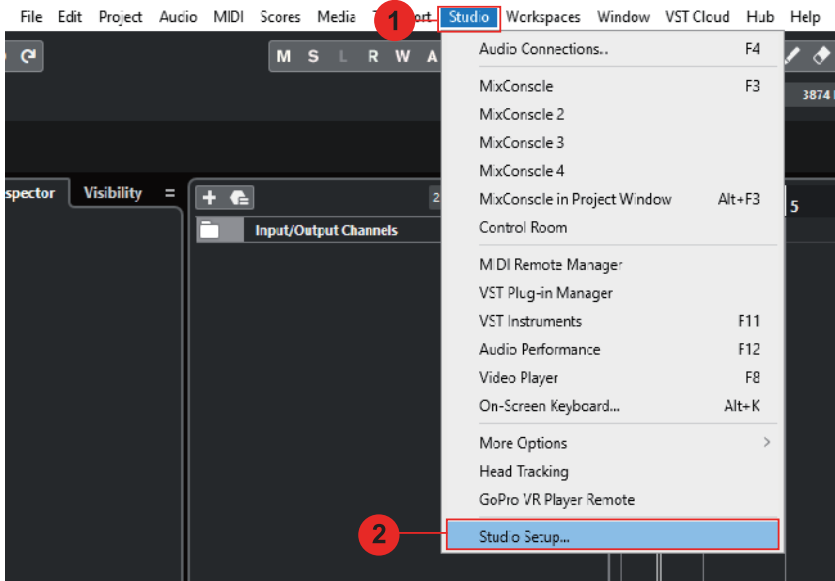
# Cakewalk



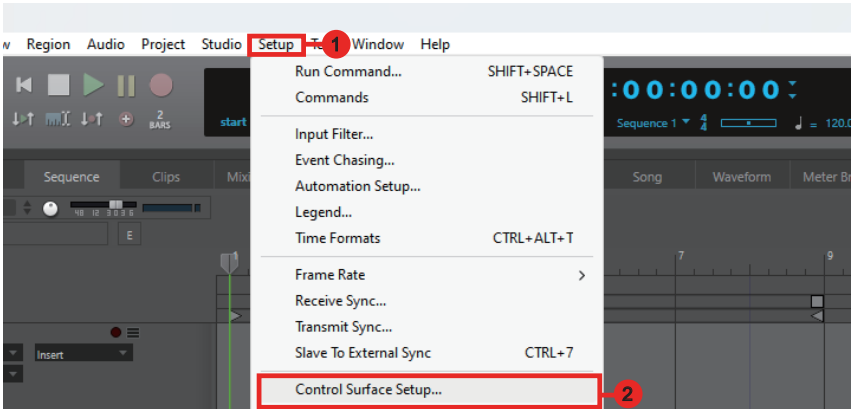




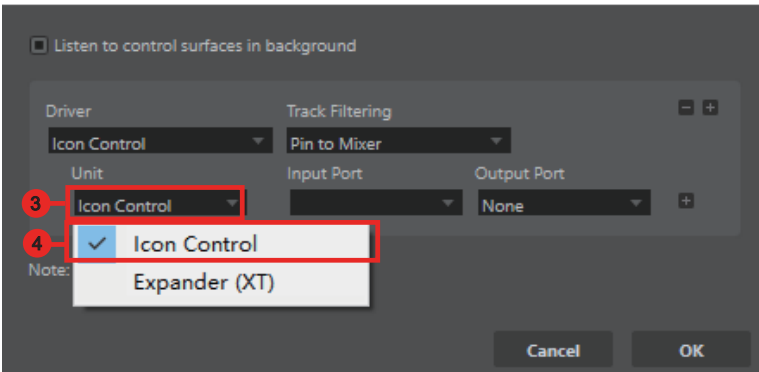
# Cubase/Nuendo



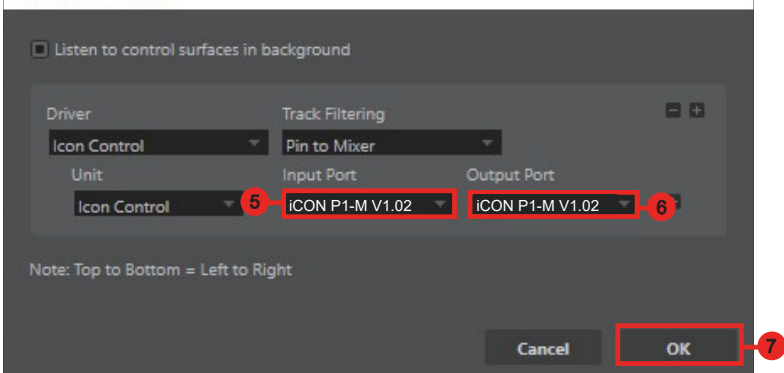
# Digital Performer 11



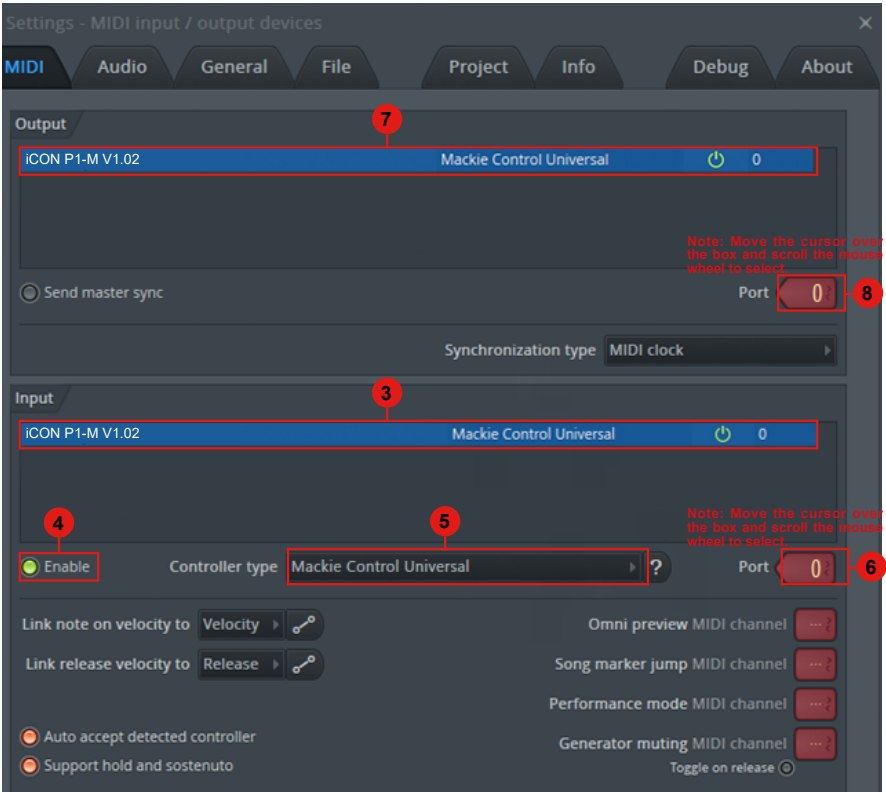
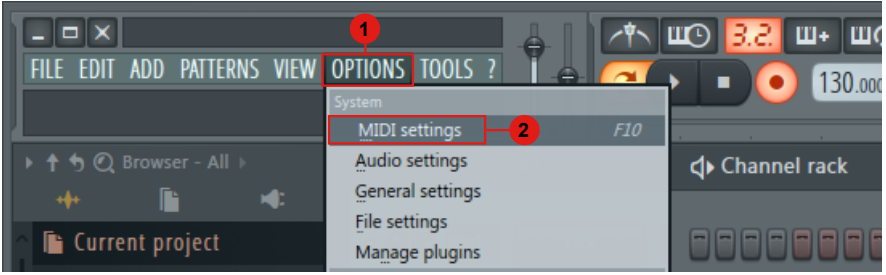
## Control Surface



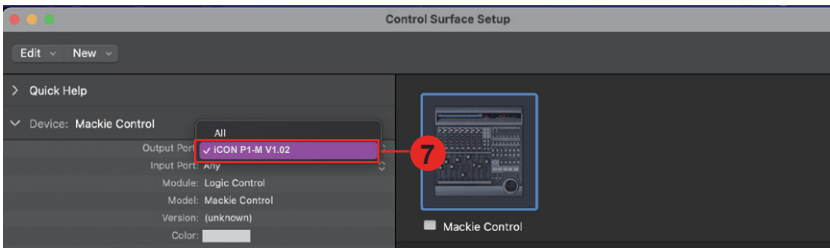
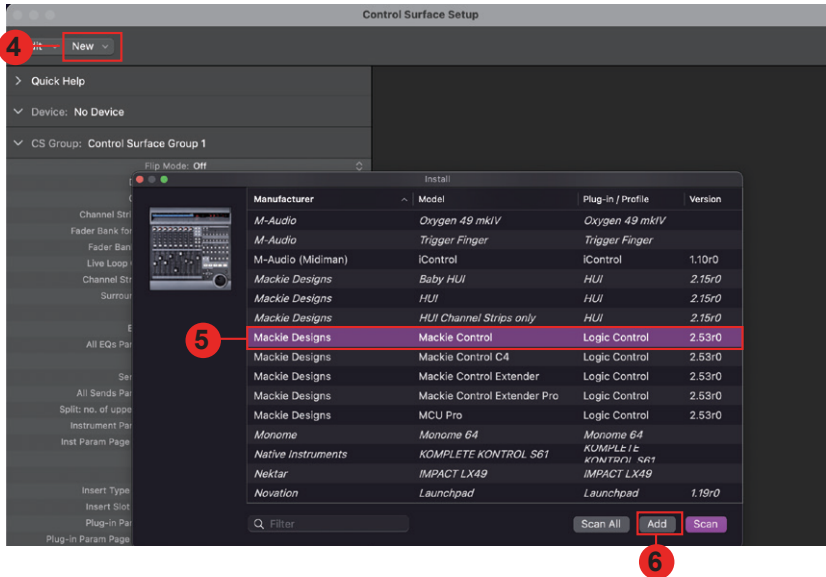
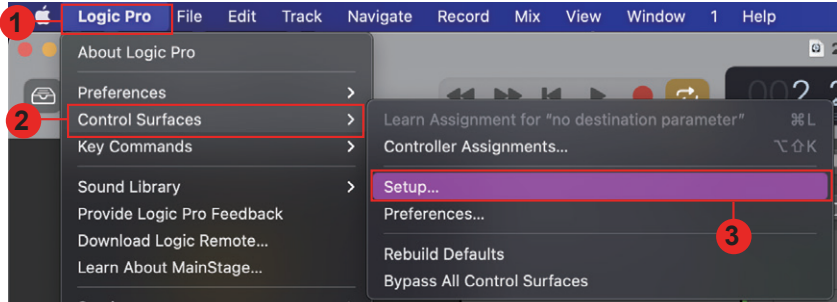
## Control Surface



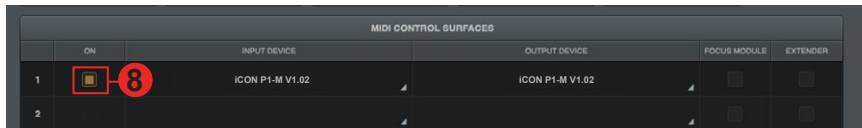
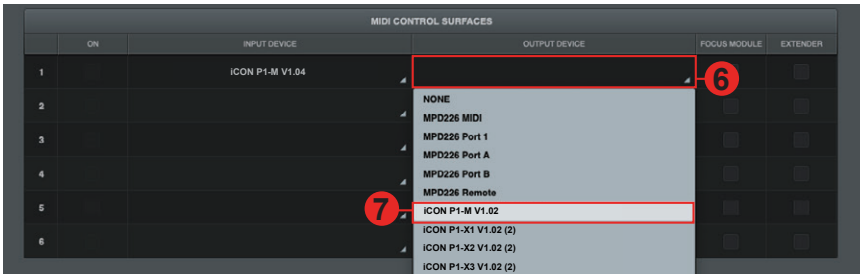
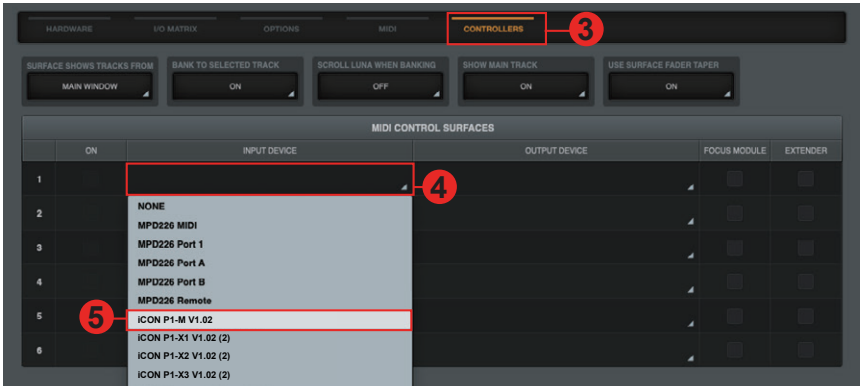
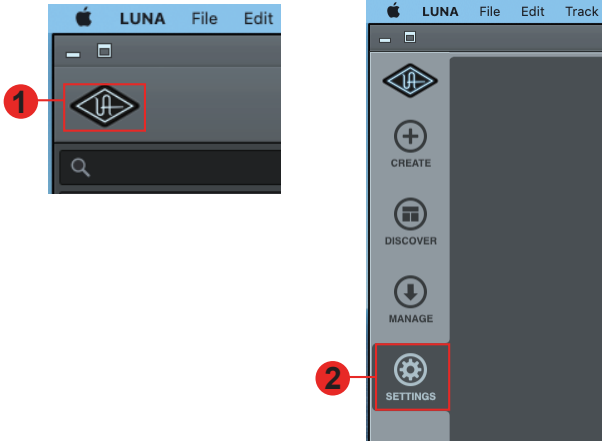
# FL Studio



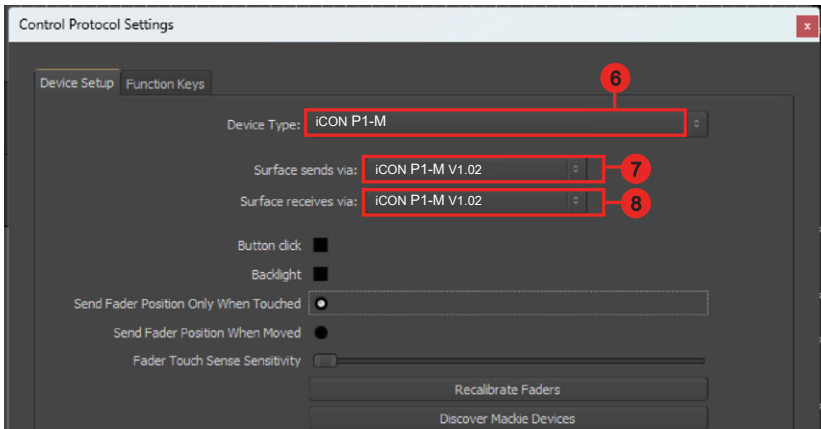
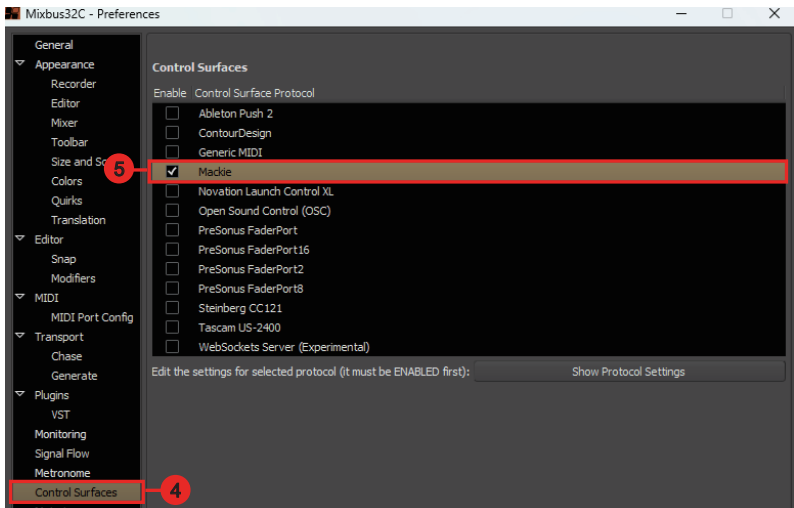
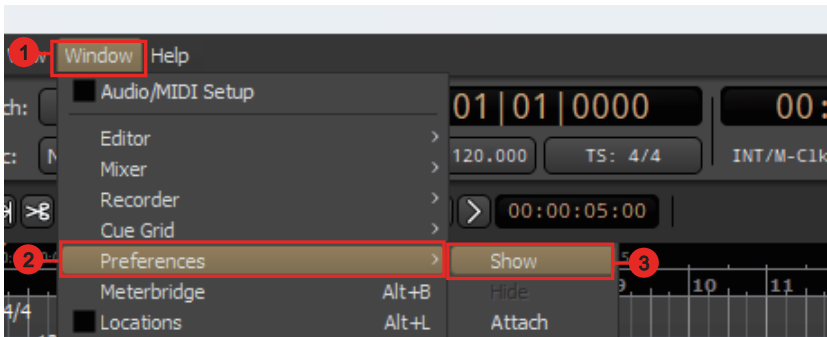
# Logic Pro



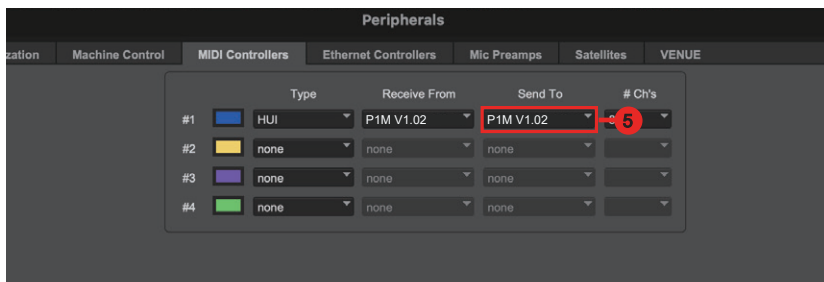
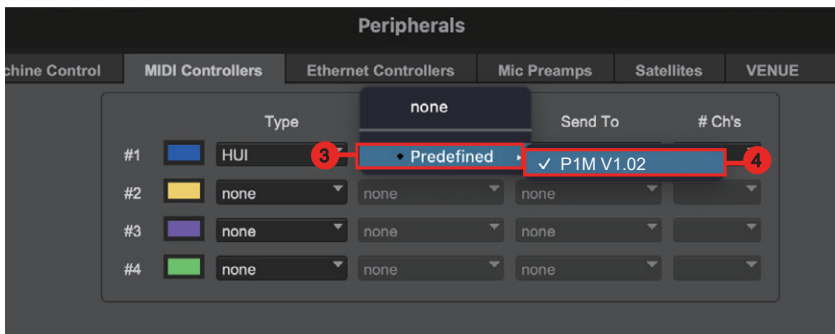
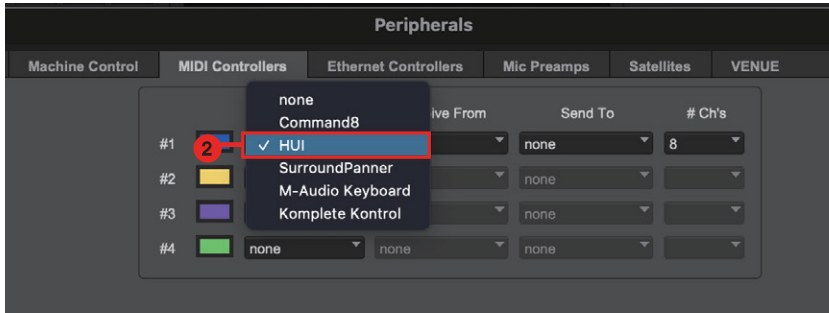
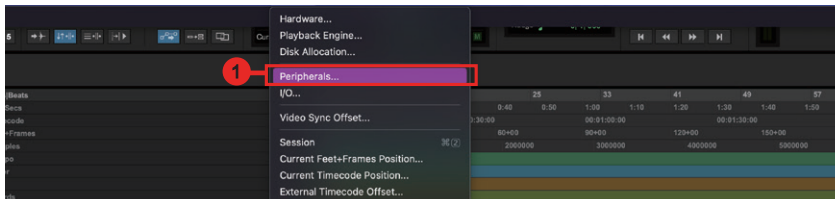
# Luna



# Mixbus 32C

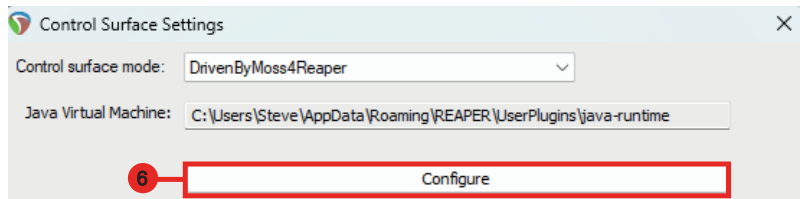
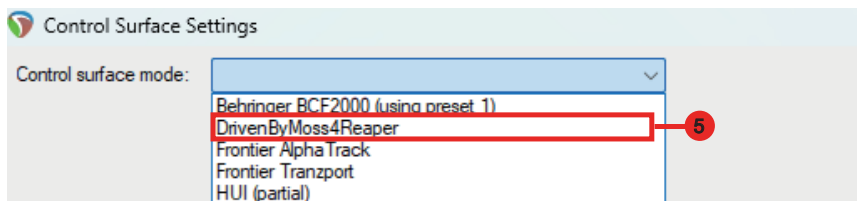
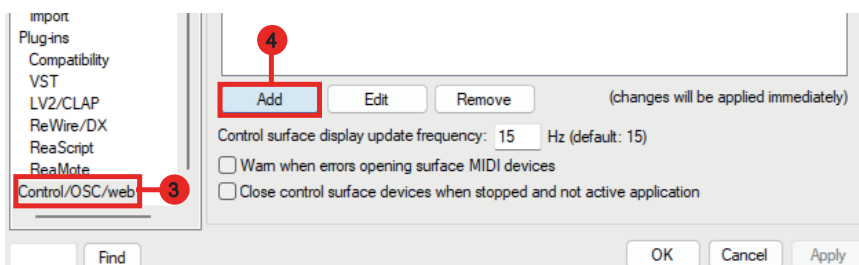
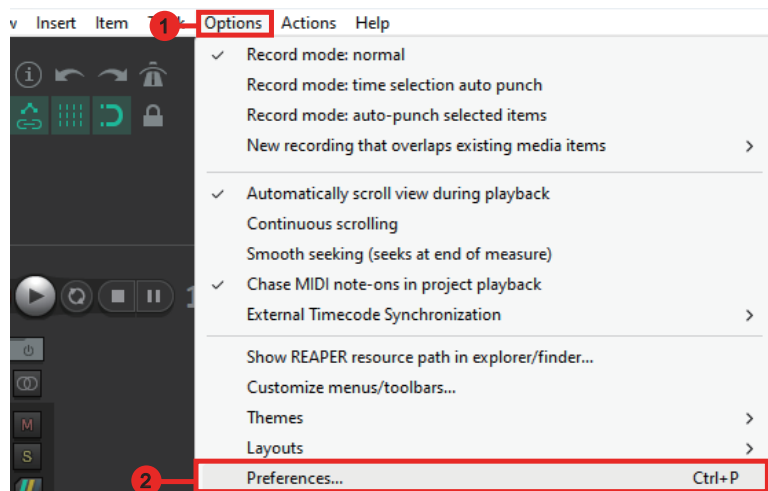


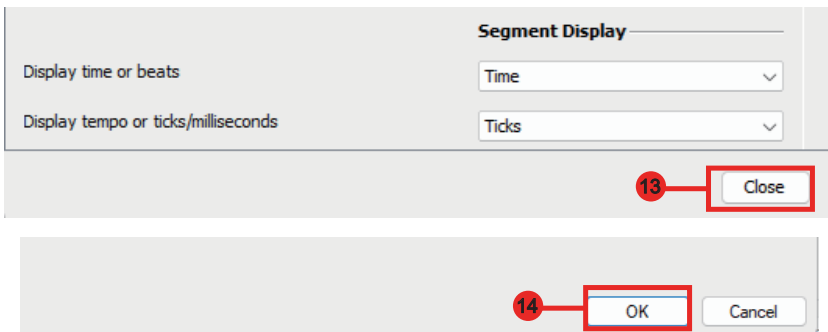
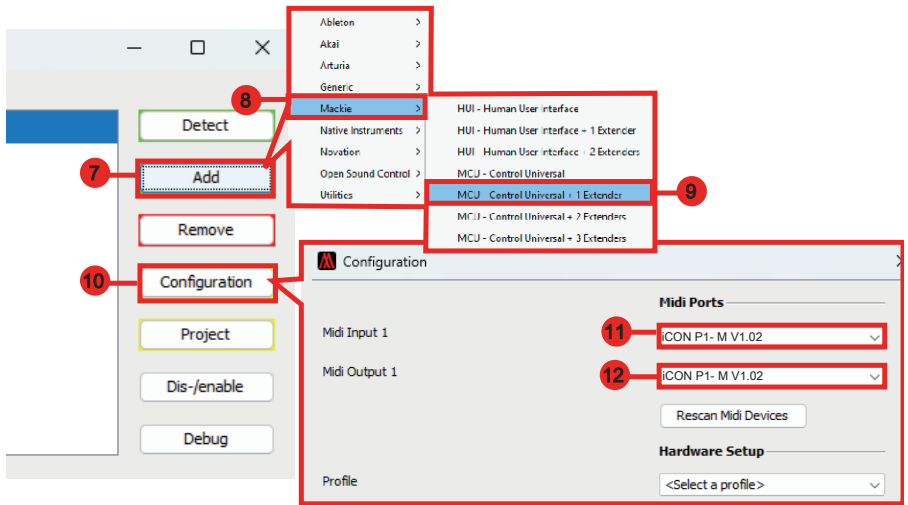
# Pro Tools



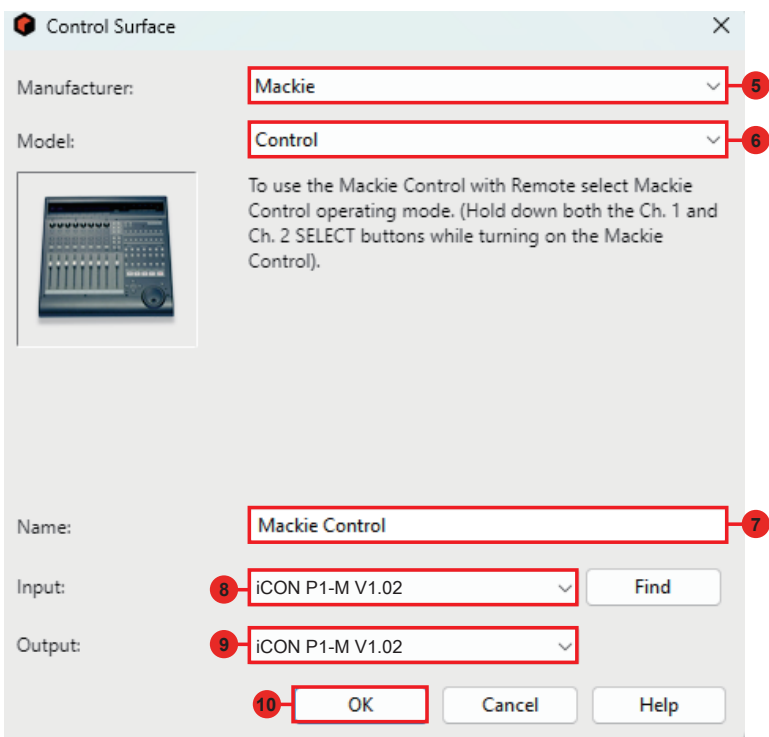
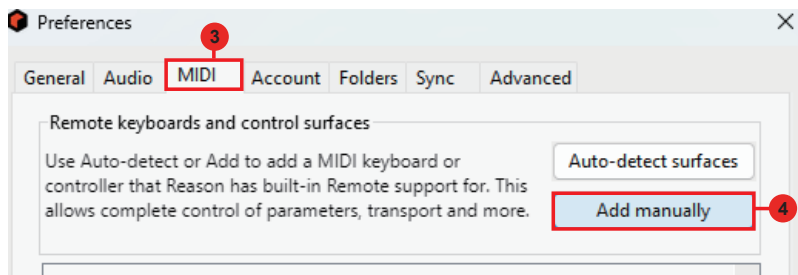
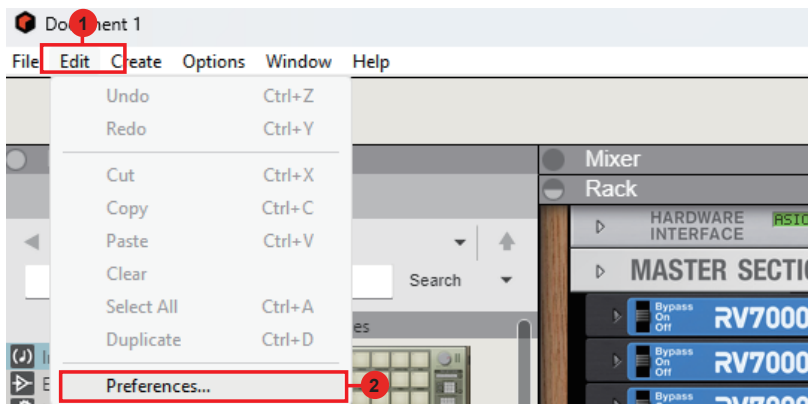


# Reaper

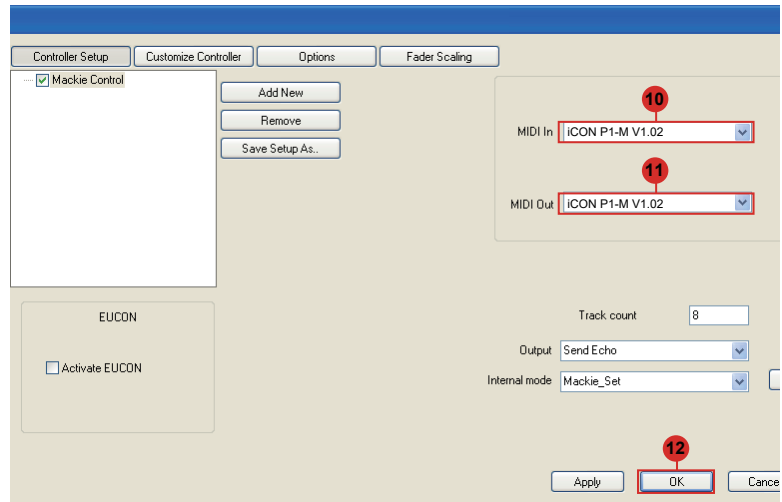
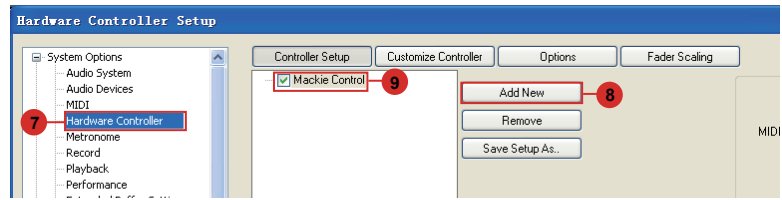
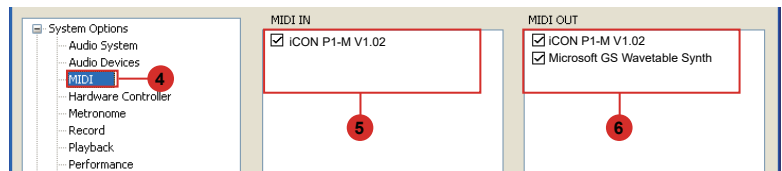
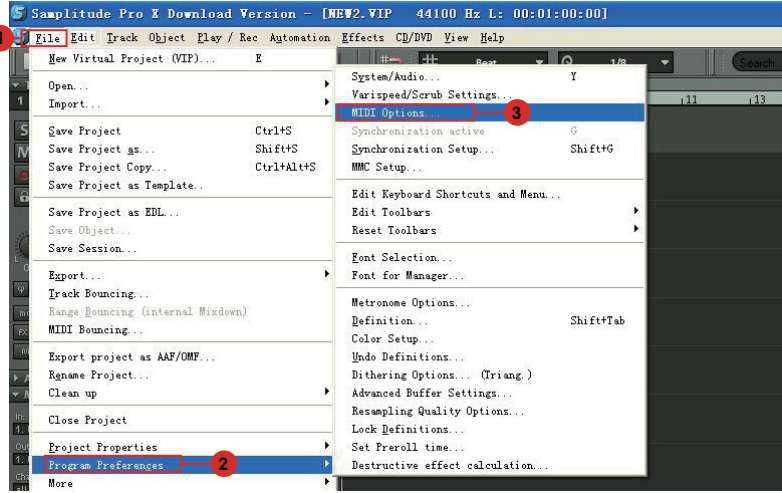




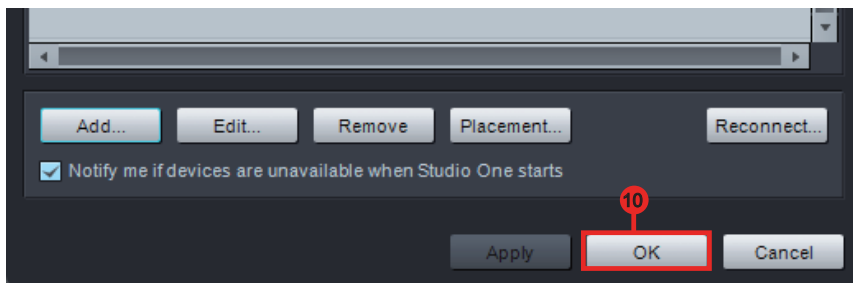
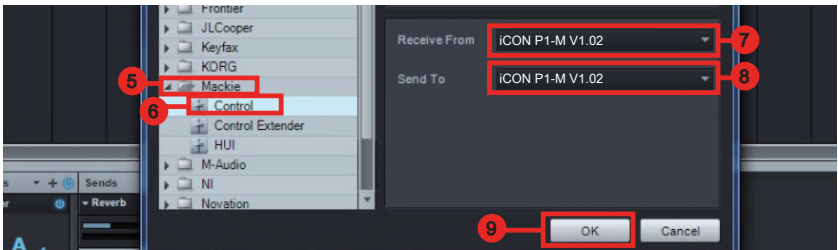
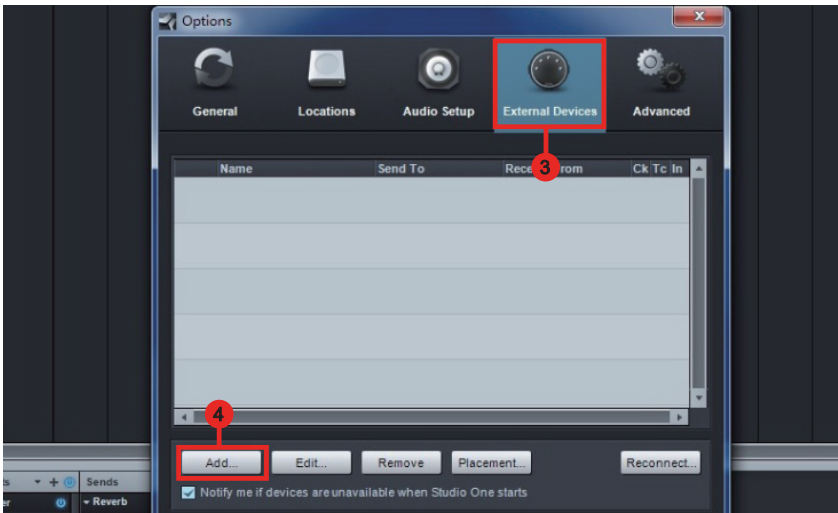
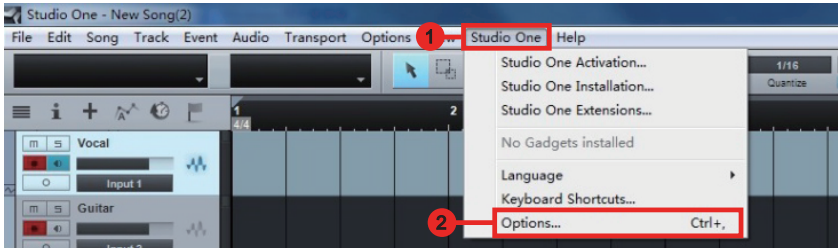
## Reason



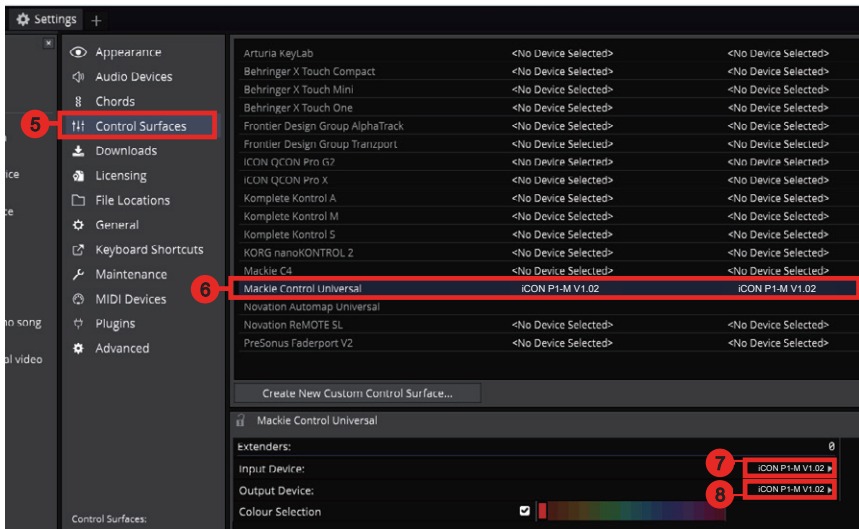
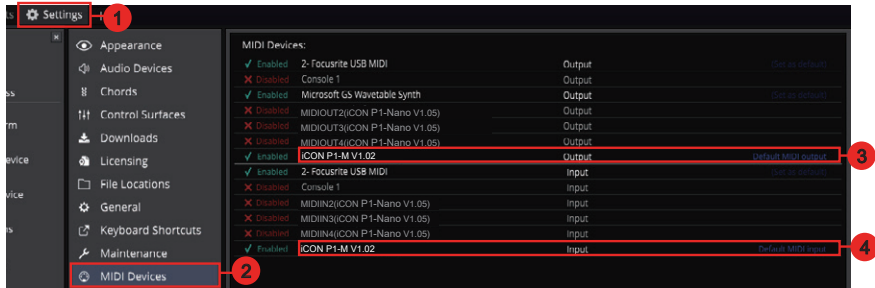
# Samplitude



# Studio One

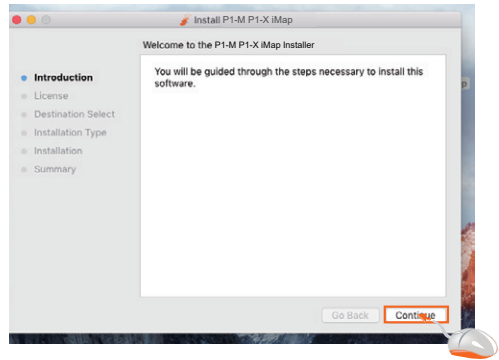


# Tracktion Waveform

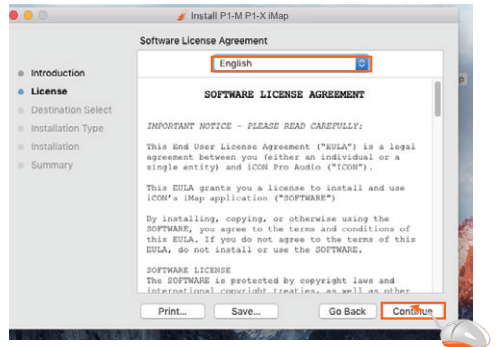




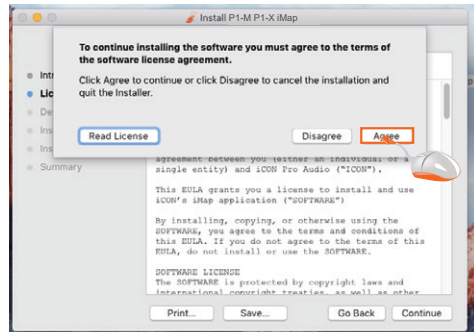
### 3. Click “Continue”.



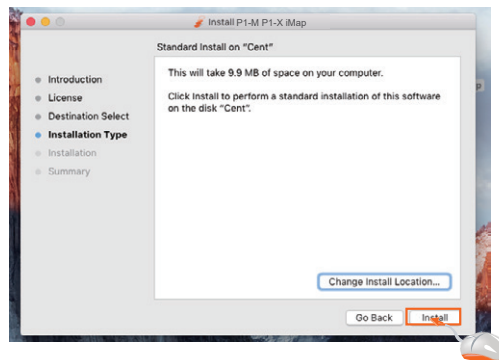
### 4. Read the license agreement. Click “Continue”.



### 5. Click “Agree” to agree to the license terms.

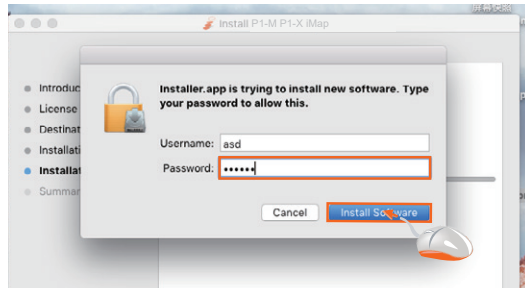


### 6. Click “install”.

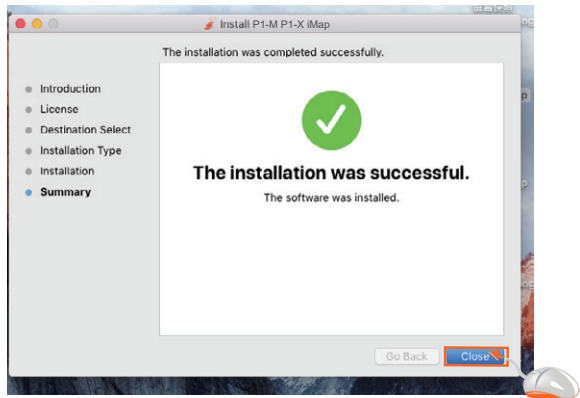




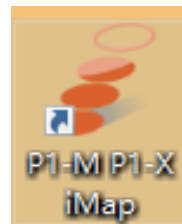
7. Enter your username and password. Click “Install software”



8. Click “Close” after installing your iMAP software.



9. Click on the shortcut to launch the iMAP.



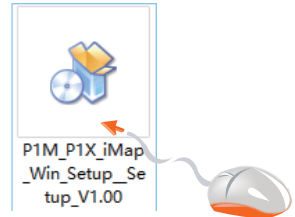
# Installing iMap™ for Windows

Please register your device, visit your User Center at [www.iconproaudio.com](http://www.iconproaudio.com) and download the iMAP. iMAP is also available on the product page on the website [www.iconproaudio.com](http://www.iconproaudio.com)

Please follow the procedures below step-by-step to install your iMap™ software.

1. Turn on your PC.
2. Download the iMap from your User Center at [www.iconproaudio.com](http://www.iconproaudio.com)

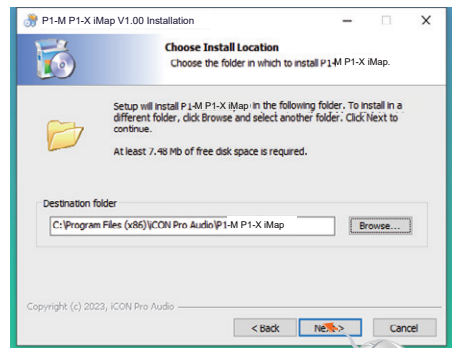
After you download the file, please click it to start the installation process.



3. The Setup Wizard will appear  
Setup wizard appears, please click "Next"

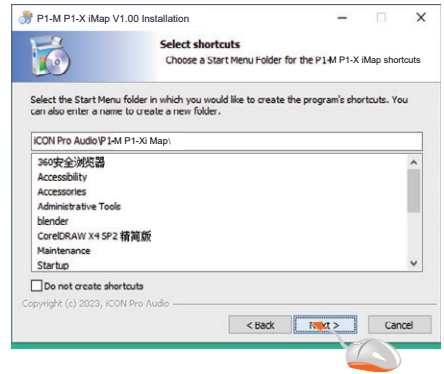


4. Choose Install Location  
Choose your preferred install location for iMap™ or use the default location and click "Next"



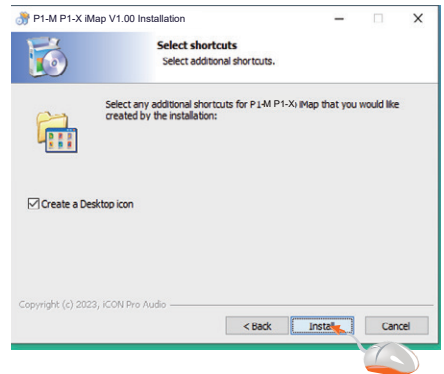
## 5. Select shortcut

Select the start menu folder in which you would like to create the iMap™ shortcut. Then click “Next”



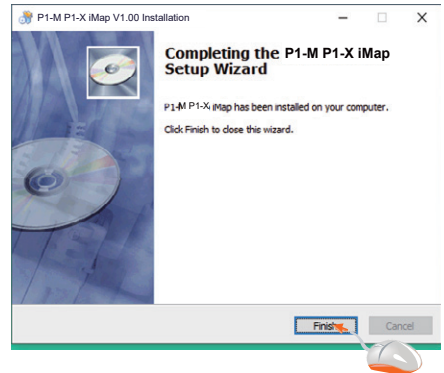
## 6. Create a shortcut on your desktop

Please uncheck the box if you do not want to place a shortcut icon on your desktop for iMap™; otherwise click “Next”.



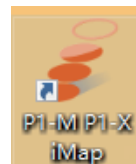
## 7. iMap™ begins installation

The iMap™ installation has now started, wait for it to finish. Then click “Finish”.



## 8. Installation finished

Click “Finish” to complete the iMap™ software installation.



# The iMAP™



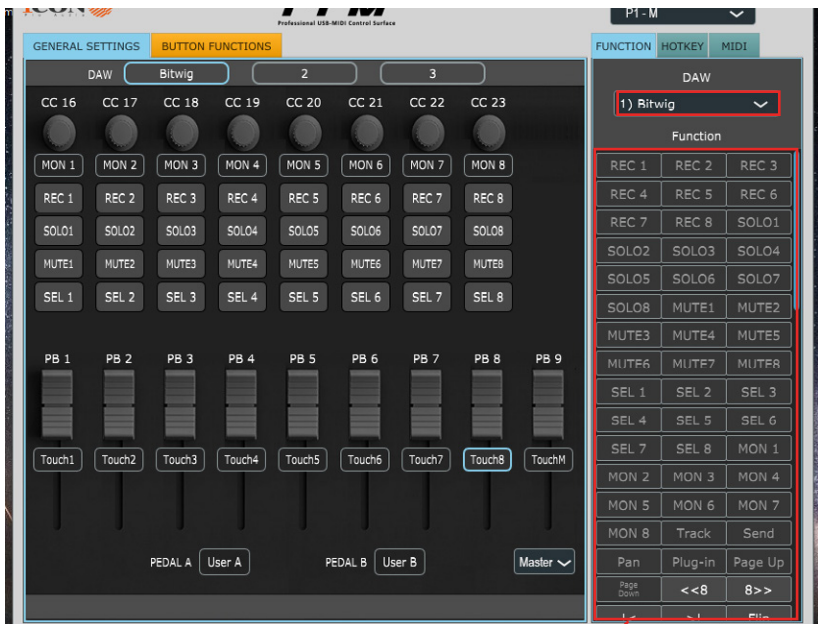
The intelligent design of the new, highly advanced iMap means that users can make changes in real time - no need for 'sending data'. Users can load three DAWs of their choice via the three buttons at the top of the iMAP.

Simply click and load the DAW of your choice via the drop down box for each of the three buttons 1, 2 and 3.

In this example, let's use Bitwig for our first DAW, Cubase for our second and Logic Pro as our third. First let's choose Bitwig.

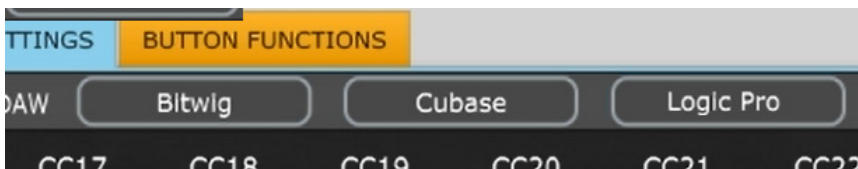


Click button one and choose Bitwig from the drop down box.



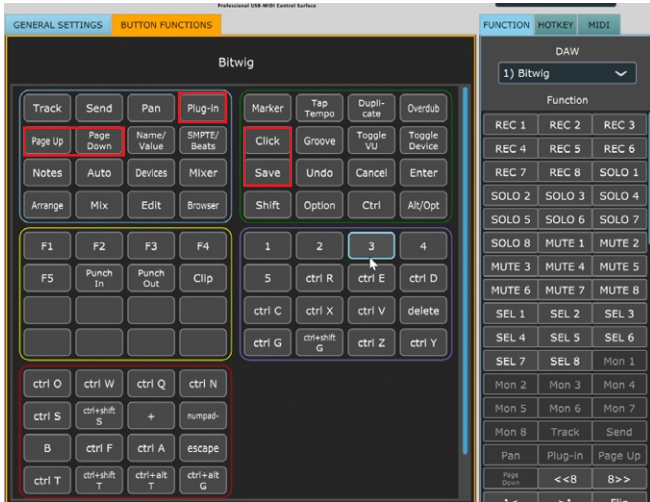
Now, Bitwig mode has loaded along with all of its functions.

In the same way, let's load Cubase for button 2 and Logic for button 3. You will see these reflected in the buttons 1, 2 and 3 in the iMAP.



The P1-M will organize the DAW functions in a default state as communicated via Mackie Control Protocol.

To demonstrate this, let's turn our attention again to DAW #1; Bitwig. Here we can see the default settings have been loaded in each color mode. Here in DAW #1, for Bitwig, "Plug in" and "Page Up/Down" are organized within the blue color mode, whereas "Save" and "Click" are organized within the green mode.

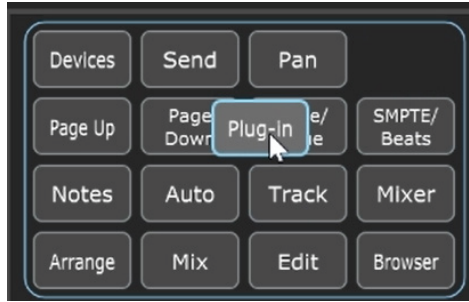


This is reflected in the touchscreen display on the P1-M. All of the function settings on the second screen (the button functions) in the iMAP will reflect those on the P1-M. In other words - what is on the second main screen in the iMAP, will be on the screen on the P1-M. Any changes will be immediate. Clever hey?!

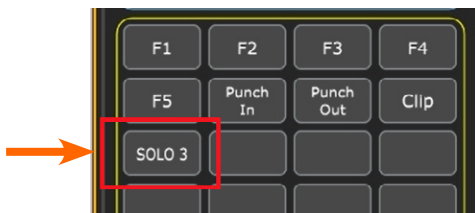
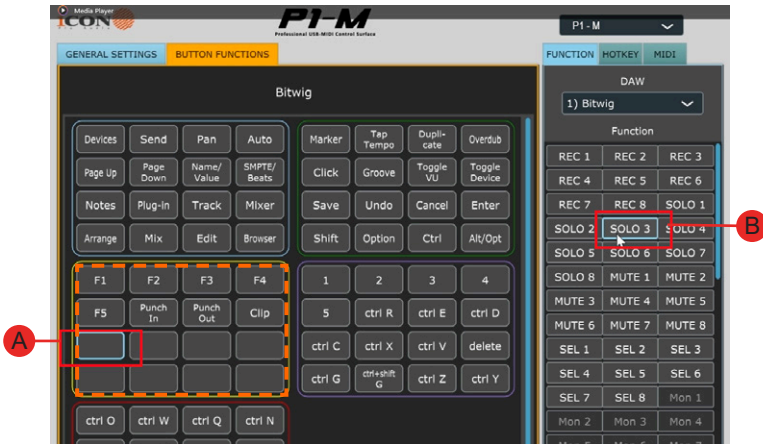


Note: You do not need to press the touchscreen hard to make it work!

If you would like to change the functions to suit your needs, it is easy to do. Simply drag and drop with your mouse from within the boxes and place a function where you would like it to be.



You can also assign functions via the function list beneath the DAW drop down list. Simply click on the space where you would like the function to appear (A) and click on the function (B).



All changes made will display immediately on the P1-M. There is no need to send data to the machine.

## Using the Dual Button Function on the Touchscreen

In some DAWs, for some functions, when pressing a button a further action is required. This would usually require the use of a mouse to select the subsequent option. With the P1-M, however, you can use two buttons together.

You can program the first required function in - let's say the first row in the iMAP in red mode. Let's call that the primary button.

If that primary button/function requires a further (secondary) action as eluded to above, and this is available in the commands in the iMAP for that particular DAW, you can place this second button on, say the second row in red mode.

Please note, that you cannot place two buttons that you intend to use together on the same row.

If there are a number of possible secondary button options, you can place all of these on the second row, (or whichever row you choose, just not the same row as the primary button). You cannot use more than two buttons together at the same time, but you can create a 'menu' of secondary commands to select from in that second row, (or whichever row you choose).

So, let's take a generic example (and this does not relate to any specific DAW or DAW command - it is simply to demonstrate the potential of this system);

The first button (the primary button) in this fictitious DAW is 'Add Track'. We're going to place this on the first row of the iMAP in the red mode (or layer) of the iMAP. This immediately appears on the device's touch screen as information is transmitted in real time.

For the attendant secondary options (remembering this is a fictitious DAW), we're going to place 'stereo audio track', 'mono audio track', 'instrument track', 'MIDI track' on buttons in the second row. These are the secondary buttons and designed to be used in conjunction with the primary button, remembering that only two buttons can be used together at the same time. When allocating these in the iMAP, again, the information will be transmitted immediately to the device's touch screen.

When working on a project, we can now select the primary button and then any of the secondary buttons to create a track without the need for using the mouse.

To reiterate - the above example is in relation to a fictitious DAW - the options available to you and your own DAW may be limited or many, depending on the available commands of that particular DAW.

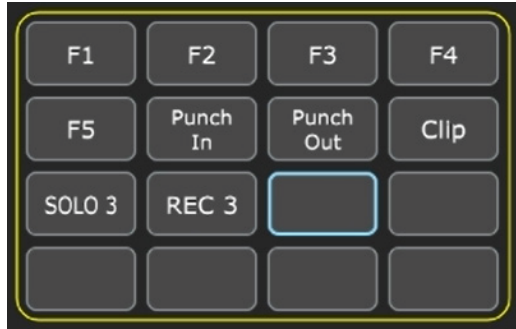
It's a great option to have available and one to remember for the future, as it could be a really useful time saving device!



# Hot Keys

You can assign QWERTY keyboard 'hot keys' to the iMAP.

First, lets select where we'd like our command to go. Click the button with your mouse so it is highlighted.



Select 'HOTKEY' in the menu on the right side of the iMAP.



Click to change the contents of a button.



Type in the hot key you would like to use on your QWERTY keyboard. Click Enter.



Re-name the hot key to something more memorable if you wish!

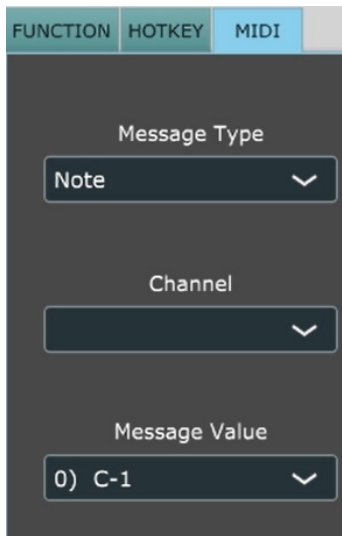
The results will appear in the iMAP and be transmitted to the P1-M instantaneously!



## Sending your own MIDI messages

You may set up the touchscreen to display your own MIDI messages. The physical controls such as the faders, knobs, buttons, and the jog wheel on the V1-M can also be mapped in this way.

You may adjust "Pitch", "Note", "CC", "Channel" and "Message" values for MCP and "Value 1", "Value 2" and "Function" for HUI, depending on the control element.



## Using Virtual Instruments

Some users like to use DAW controllers to control the parameters of Virtual Instruments. It must be noted from the outset that this is entirely DAW and Virtual Instrument-dependent. Some Virtual Instruments have limited (and sometimes no) functionality.

There are various CC values that can be programmed i.e. CC1 (Modulation) and CC11 (Expression) are the most commonly used parameters).

Please note that 'vibrato' has no CC value and, should that parameter be a feature of a Virtual instrument you would like to control, you may be able to map it via MIDI learn. MIDI learn instructions can be found in the manual for your DAW.

Please note that some virtual instruments have limited capability in respect of receiving communication from generic or universal external controllers.

*Please also note that the jog wheel can be used as a parameter controller of plug ins, EQs and instruments, **without** having to program it especially, by pressing the 'focus' button and hovering with your mouse over the parameter in question. This is a potentially extremely useful and powerful feature and very simple and easy to use! It's definitely one to remember!*



# Changing Transport functions with the iMAP

You can set the transport functions with the iMAP to perform simultaneous actions in multiple DAWs.

Let's say Femi has two projects, one in Cubase and one in Studio One. She wants to play both at the same time. She can instruct the iMAP to have both DAWs respond to PLAY in this way.

Equally, she can set all of her DAW's to do this within the iMAP.

The diagram below shows how she can do this.



# Other Functions in iMap™



## 1. "Save file" button

Click this button to save your current settings for the P1-M. The file is an ".imap" file.

## 2. "Load file" button

Click this button to load a previously saved ".imap" setting file for your P1-M.

## 3. "Firmware Upgrade" button

Click this button to enter into the firmware upgrade window for P1-M. Please refer to the firmware upgrade procedure, which follows.

## 4. "Lock" button

Click this button to lock the touchscreen settings in place.

# Firmware upgrade

## P1-M functional firmware upload procedure



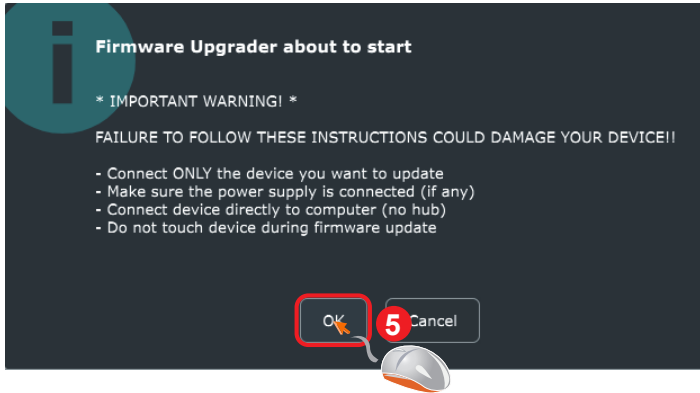
**Warning:** The firmware upload process **MUST** be completed and not interrupted during the file upload, otherwise the firmware may not be rewritten again.

**Step1:** Connect the P1-M using a USB C connection. Ensure the latest iMAP is downloaded from the website and installed, (check to make sure your iMAP is up to date!). Run the iMAP.

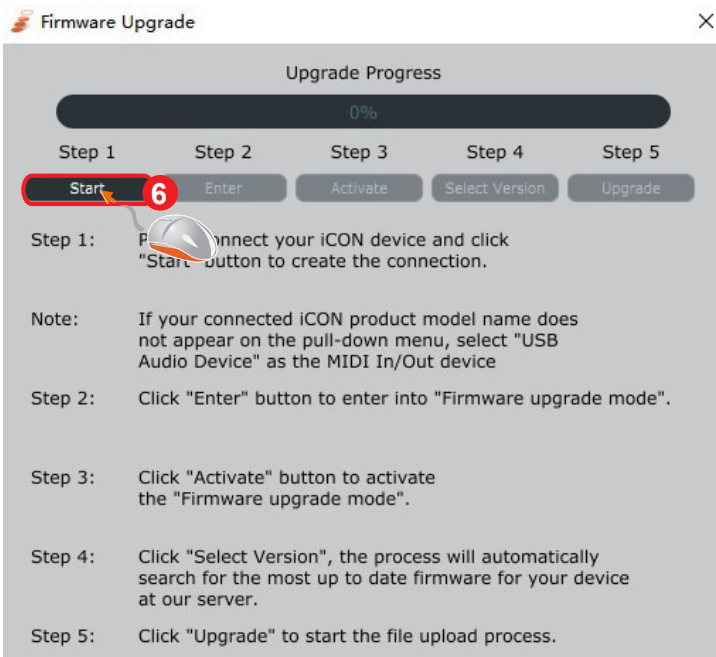
Click 'Firmware update'.



**Step 2:** Read the warning notice.

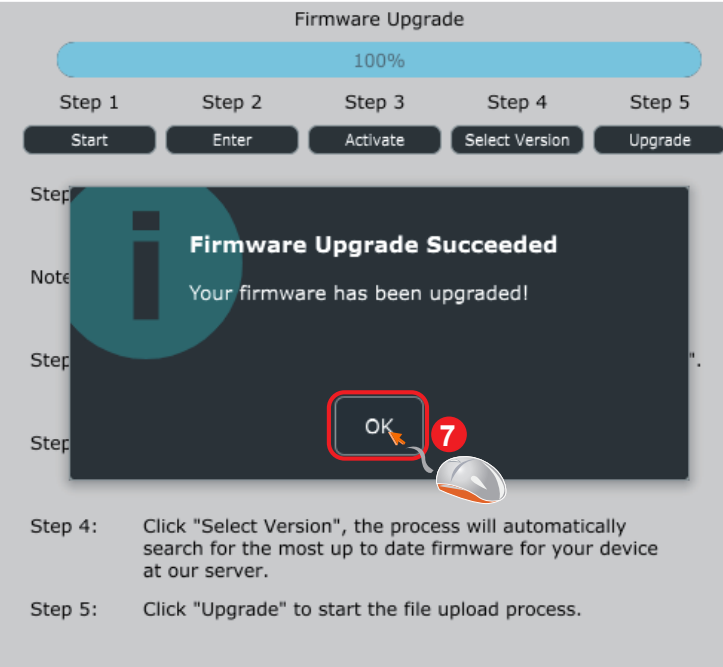


**Step 3:** Click the "Start" button.



**Step 4:** Allow the firmware upgrade process to complete.

**Step 5:** Press 'ok' once the firmware update has been completed



The screenshot displays a 'Firmware Upgrade' window. At the top, a blue progress bar is at 100%. Below it, five steps are listed: Step 1 (Start), Step 2 (Enter), Step 3 (Activate), Step 4 (Select Version), and Step 5 (Upgrade). A large dark grey message box in the center reads 'Firmware Upgrade Succeeded' and 'Your firmware has been upgraded!'. A red box highlights the 'OK' button, with a red circle containing the number '7' and a mouse cursor pointing to it. A speech bubble icon is also visible near the 'OK' button.

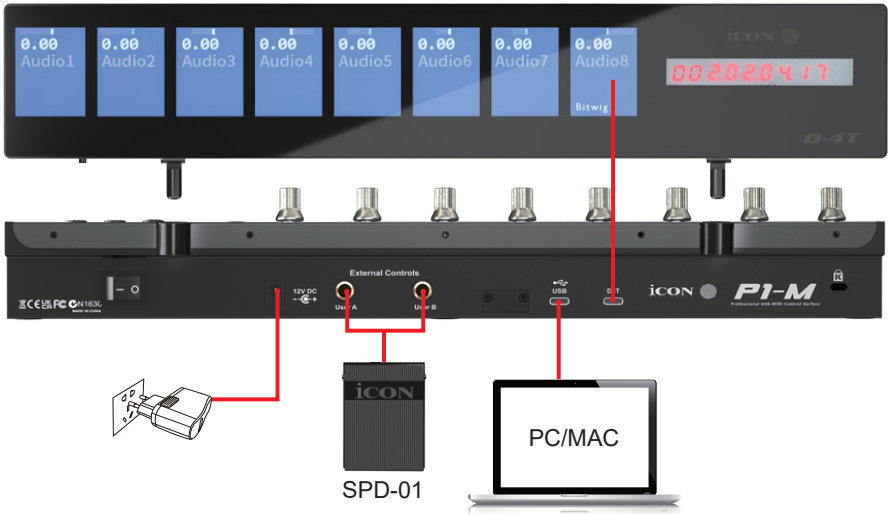
Step 4: Click "Select Version", the process will automatically search for the most up to date firmware for your device at our server.

Step 5: Click "Upgrade" to start the file upload process.

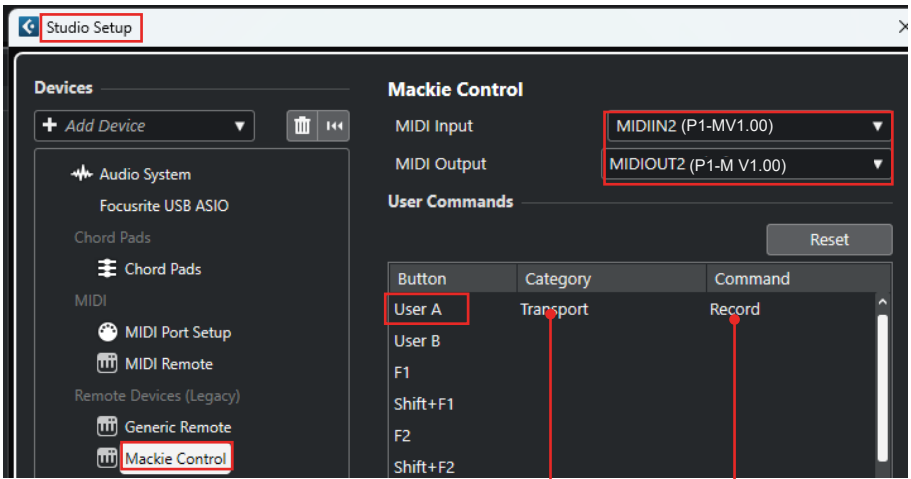


# Hardware Connections

D4T



## Configuration of User A and User B in Cubase (foot pedal);

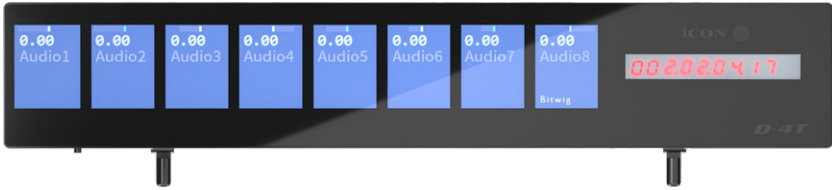


choose desired function from drop down lists

Currently, only a few DAWs support the use of a footswitch in DAW controllers such as the P1-M. Please check your DAW's user manual to see if your DAW has this functionality. If so, you can then choose commands specific to the DAW to program your footswitch. For example, to toggle the 'record' function on and off (as in the example, above).

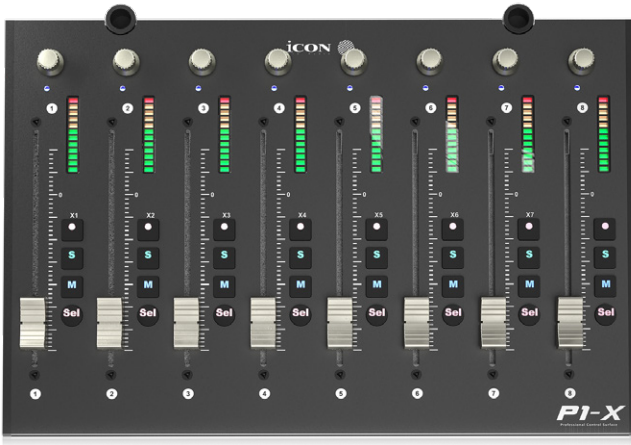
# Expanding your system

## D-4T Display Unit



The P1-M's display capabilities are expandable with the D-4T display unit.

- Extremely compact and durable
- Extremely simple installation for the P1-M MIDI DAW controller with magnetic fixtures - simply slot in!
- Large 2 inch TFT display showing channel name, control values, etc. for each channel
- Channel colors shown onscreen - (DAW dependent); extremely useful when dealing with many tracks in a project i.e. guitars=red, drums=blue etc.
- 10-segment LED display shows timecode or location of your project in either SMPTE or beat clock (bars:beats:ticks) formats
- Adjustable tilt angle for different viewing positions
- Robust construction
- Magnetic 'slot in' fixtures
- Connect via included ergonomic USB C cable
- Clear and detailed display



The P1-M is expandable, not only with the very fetching D-4T display unit, but with the P1-X expander unit!

Each unit consists of 8 12 bit faders, 8 smooth-action endless rotary encoder knobs, and 4 buttons per channel including rec, mute and solo.

The P1-X works seamlessly in tandem with the P1-M and will further enhance your recording and mixing experience. More faders means more hands-on control at your fingertips!

Coupled with a newly fitted extender, why not add a D4 display unit for the P1-X too which features a large, 2 inch TFT display showing channel name, channel colors, control values, etc. for each channel?



# Specifications

Connector: To computer	USB connector
Power supply:	12V/2. 5A DC
Current consumption:	2. 0A or less
Weight:	1.916kg (4.23lb)
Dimensions:	405(L) x 204(W) x 61(H)mm
	15. 9"(L) x 8"(W) x 2. 4"(H)

# Services

If your P1-M needs servicing, follow these instructions.

Check our online Help Center at <http://support.iconproaudio.com>, for information, knowledge, and downloads such as:

1. FAQ
2. Download
3. Product Registration
4. Video Tutorials

Very often you will find solutions on these pages. If you don't find a solution, create a support ticket at our online Help Center at the link below, and our technical support team will assist you as soon as we can.

Navigate to <http://support.iconproaudio.com> and then sign in to submit a ticket. Once you have submitted an inquiry ticket, our support team will assist you to resolve the problem with your ICON Pro Audio device as soon as possible.

To send defective products for service:

1. Ensure the problem is not related to operation error or external system devices.
2. Keep this owner's manual. We don't need it to repair the unit.
3. Pack the unit in its original packaging including end card and box. This is very important. If you have lost the packaging, please make sure you have packed the unit properly. ICON is not responsible for any damage that occurs due to non-factory packing.
4. Ship to the ICON tech support center or the local return authorization. See our service centers and distributor service points at the link below:

If you are located in the **United States**

please visit our help centre - <https://support.iconproaudio.com> and submit a ticket to the technical support team.

If you are located in **Europe**, please email the support team and wait for a response before sending the product to:

**Sound Service GmbH**  
**European Headquarters**  
**Moriz-Seeler-Straße3 D-12489 Berlin**  
**Telephone: +49 (0)30 707 130-0**  
**Fax: +49 (0)30 707 130-189**  
**E-Mail: [service@sound-service.eu](mailto:service@sound-service.eu)**

If you are located in **Hong Kong** please email the support team and wait for a response before sending the product to:

**ASIA OFFICE:**  
**Unit F, 15/F., Fu Cheung Centre,**  
**No. 5-7 Wong Chuk Yueng Street, Fotan,**  
**Sha Tin, N.T., Hong Kong.**  
**Tel: (852) 2398 2286**  
**Fax: (852) 2789 3947**  
**Email: [info.asia@icon-global.com](mailto:info.asia@icon-global.com)**

For additional update information please visit our website at: [www.iconproaudio.com](http://www.iconproaudio.com)



天猫官方旗舰店



天猫店iconproaudio旗舰店

抖音号



抖音iCON艾肯

哔哩哔哩



B站iCONProAudio

微信公众号



微信号iCON-PRO

官方售后00



4006311312.114.qq.com

中国地区用户

Twitter



[www.twitter.com/iconproaudio](http://www.twitter.com/iconproaudio)

Instagram



[www.instagram.com/iconproaudio](http://www.instagram.com/iconproaudio)

Facebook



[www.facebook.com/iconproaudio](http://www.facebook.com/iconproaudio)

Youtube



[www.youtube.com/iconproaudio](http://www.youtube.com/iconproaudio)

Website



[www.iconproaudio.com](http://www.iconproaudio.com)

Support



[support.iconproaudio.com](http://support.iconproaudio.com)

Dashboard



[iconproaudio.com/dashboard/](http://iconproaudio.com/dashboard/)

[www.iconproaudio.com](http://www.iconproaudio.com)